



# Community Resource Person: Self-financed extension worker

Sustainable Aquaculture for Food and Livelihood (SAFAL)



# Pictorials



Training of CRPs at Aquaculture Field School, Bagibari, Assam



Exposure visit of CRPs and CRP Trainers to Naihati, West Bengal



Field level training by CRPs, Assam



Handholding farmers on how to maintain Farm Record Book, Odisha



Farmer level training by CRPs, Odisha



CRPs using co-created knowledge products during training, Assam

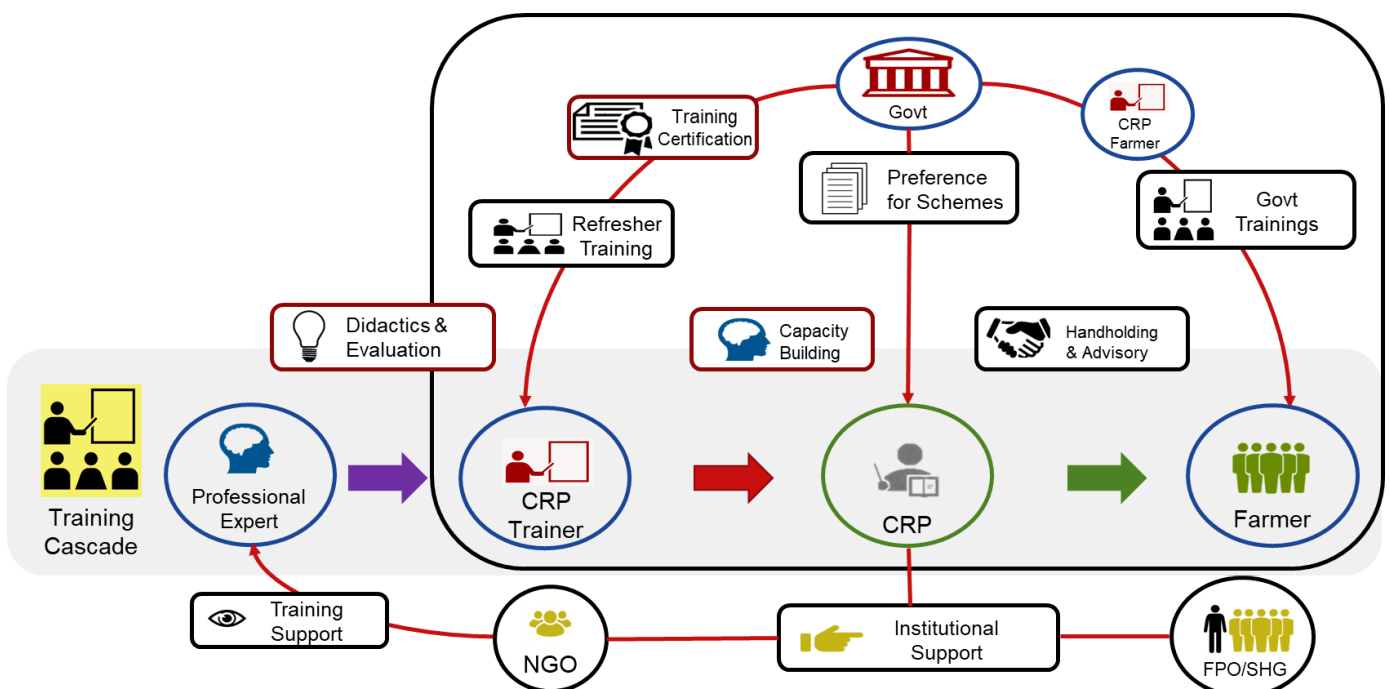


# Overview

On behalf of the German Federal Ministry for Economic Cooperation and Development (BMZ), the Deutsche Gesellschaft für Internationale Zusammenarbeit (GIZ) GmbH implements the Indo-German Development Cooperation Project 'Food Security through Integrated Aquaculture' (EIAA) in cooperation with the Ministry of Fisheries, Animal Husbandry and Dairying (MoFAHD), Government of India. The project aims to increase the production of fish from sustainable aquaculture along with the associated increase in income and demand for labour. The political and institutional framework conditions for the implementation of sustainable and resource-saving aquaculture shall be improved while complementing various Indian government schemes, especially the Pradhan Mantri Matsya Sampada Yojana (PMMSY). EIAA is part of the Global Programme on Sustainable Fisheries and Aquaculture (GP Fish) under the Special Initiative "Transformation of Agricultural and Food Systems" by BMZ. The project is locally known as "Sustainable Aquaculture for Food and Livelihood", hereafter referred to as SAFAL.

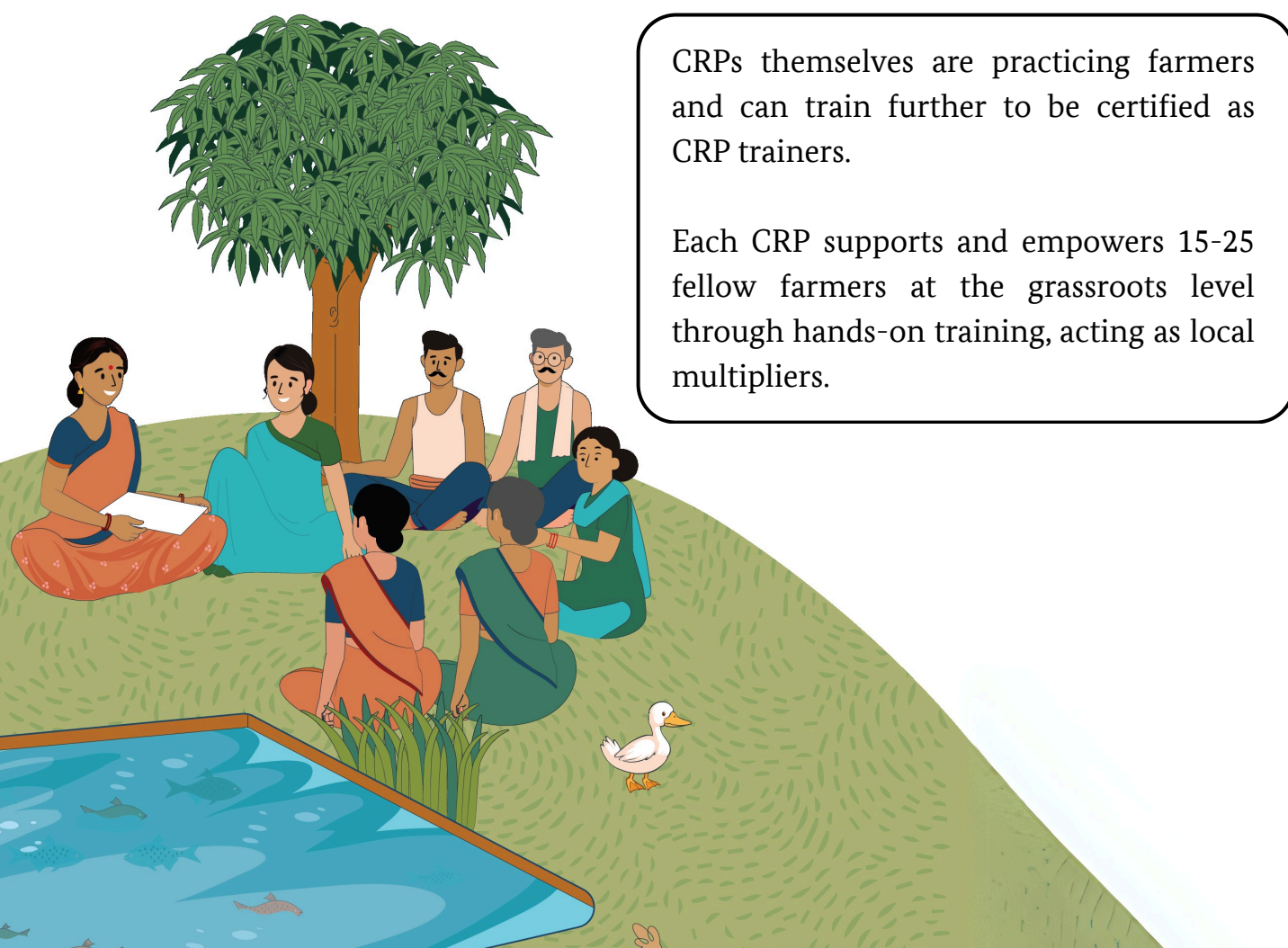
A key initiative under the SAFAL project, the Community Resource Person (CRP) model is a grassroots approach to strengthening the aquaculture sector by building a cadre of trained individuals from within the community. These individuals act as local change agents, promoting sustainable aquaculture practices aligned with agroecological principles, while also enhancing the outreach and effectiveness of government schemes within the aquaculture community. Acting as Aquaculture Service Provider (ASP), CRPs are the empowered driving force behind community-led aquaculture development. As key stakeholders of Farmer Institutions (FI)-Farmer Producer Organisation (FPO)/Farmer Producer Company (FPC)/ Cooperatives (CoOp)/Self Help Group (SHG)/ Producer Group (PG) etc, they play a crucial role in reinforcing local systems. Beyond providing extension services, CRPs also take ownership of vital resources like seed banks, ensuring timely and quality access to inputs for local farmers.

## CRP Model under Indo German Development Cooperation project



## Selection criteria of CRPs

- ✓ Must own a fish pond.
- ✓ Must be between 18 and 45 years old.
- ✓ Must be a member of a Farmer Institution.
- ✓ Must have 4-5 years of experience in aquaculture.
- ✓ Minimum educational qualification should be Class 10, with basic digital literacy
- ✓ At least 50% of selected CRPs should be women fish farmers.
- ✓ Must be socially accepted and respected by fellow farmers in the community.
- ✓ Must demonstrate a positive mindset towards sustainable aquaculture practices.
- ✓ Should have high emotional intelligence—the ability to empathize with farmers' challenges and needs.
- ✓ Should have good communication skills and social competence, including respect, trust, and the ability to listen and respond.
- ✓ Should be ambitious and motivated for business development, either with or without initial capital.

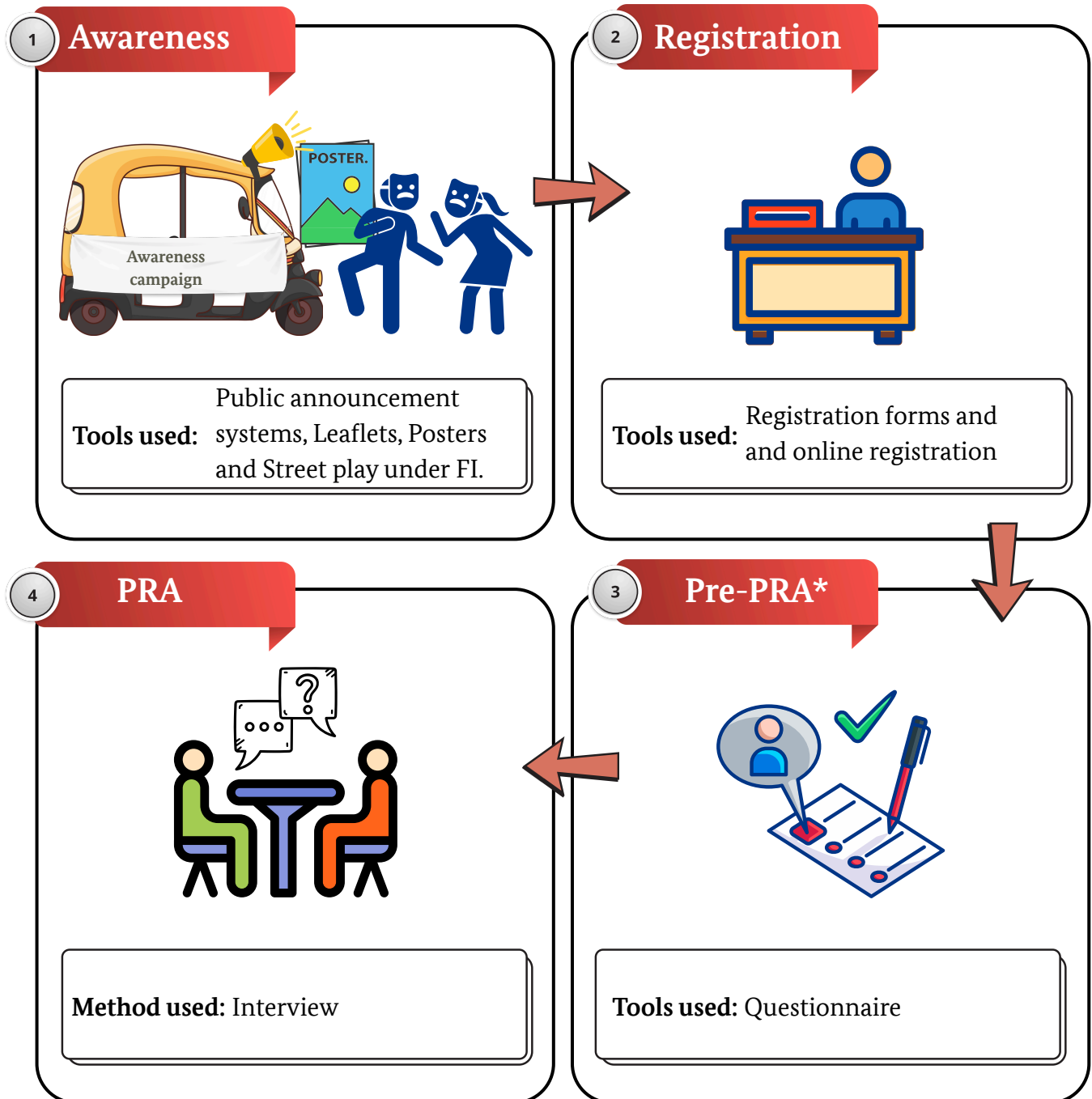


CRPs themselves are practicing farmers and can train further to be certified as CRP trainers.

Each CRP supports and empowers 15-25 fellow farmers at the grassroots level through hands-on training, acting as local multipliers.



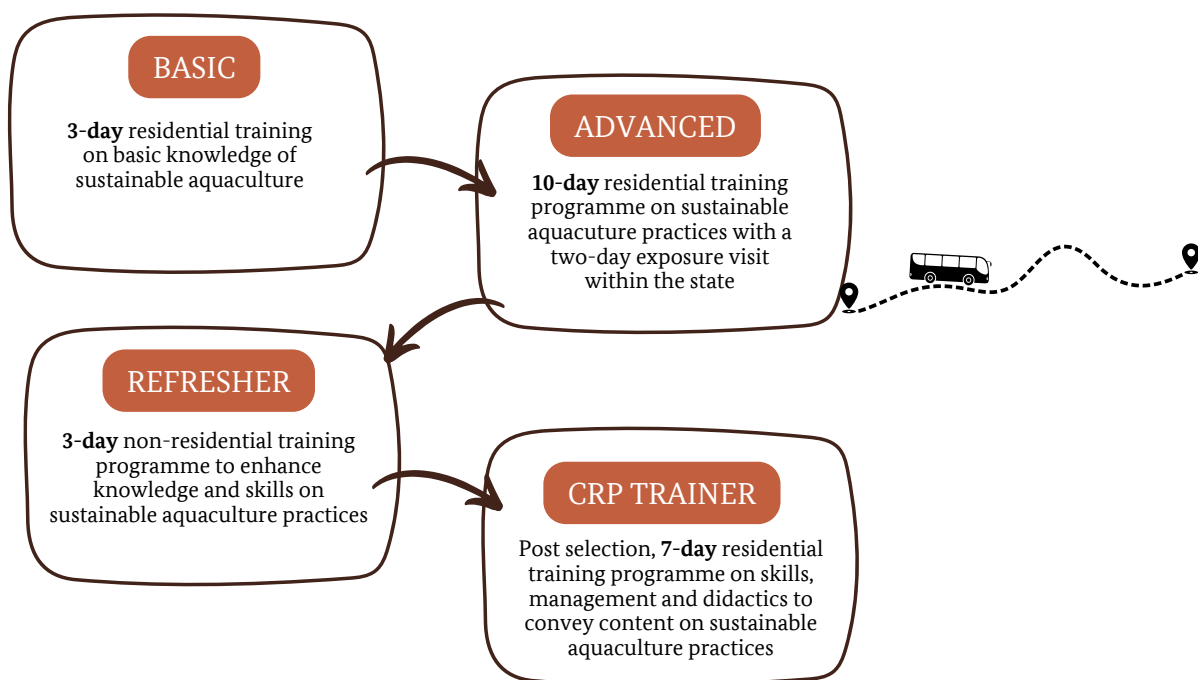
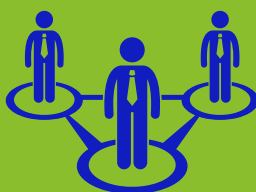
# CRP selection process



CRPs are selected based on specific criteria from within the local area of the Farmer Institution, ensuring familiarity with local contexts and maintaining homogeneity among CRP trainees. The selection process is rigorous and involves conducting a Participatory Rural Appraisal (\*PRA) under the guidance of the farmer institution, with approval from its Board of Directors (BoDs). This process also forms the basis for their structured capacity building.



# Training pedagogy for CRPs

**566 CRPs**  
(289 in Assam and 277 in Odisha)

**143 CRP Trainers**  
(48 in Odisha and 95 in Assam)



**2**  
STATES

**17**  
FPOs

**43**  
Producer Groups



**3.3** million kg  
fish production per  
year

**100**  
Self-Help Groups



**7000+** farmers



**1500+**  
hectares water areas

## Impact



### Economic Transformation

Encourages self-reliance as self-financed extension service providers who earn through fee-based services, input supply, and advisory support.



### Improved Productivity

Improves fish health and growth by encouraging better farm management practices.



### Protein Production

Address the nutritional needs of the nation, thereby contributing to the overall improvement of food security, public health and national/state level protein production through sustainable aquaculture practices.



### Quality inputs

Enhances aquaculture value chain by reducing input dependency through local seed banks and resource hubs managed by CRPs.



### Technical support

Trains and supports fish farmers in adopting low-cost, sustainable techniques.



# Self-financed Extension Service Model of Sustainable Aquaculture (SA)



## COMMUNITY RESOURCE PERSON (CRP)



**SELECTION OF CRPs** BY FARMER INSTITUTIONS (FPO/FPC/SHG/PG/Co-Operatives) BASED ON PRE-DETERMINED CRITERIA



### HANDS-ON TRAINING OF CRPs ON SA PRACTICES

- Residential (3 days + 10 days)
- Non-residential (3 days + 10 days)
- Refresher (9 days)

### USE OF KNOWLEDGE PRODUCTS DEVELOPED BY GIZ

- Trainer's Manual
- Farmer's Handbook
- Farm Record Book
- Information, Education and Communication (IEC) materials
- Pamphlets, Posters and Flip-overs



### MOTIVATION

- SOCIAL & ENVIRONMENTAL
- IN KIND
- FINANCIAL
  - Goods
  - Services
  - Access to finance & mobilisation

1 Block

500 farmers

1 FPO/  
10 PGs

20  
CRPs

### STRENGTHENED EXTENSION MODEL

- Empowered farmers.
- Leveraging access to Govt. schemes.
- Sustainable farmer institutions.
- Holistic integration of production, nutrition, livelihood and environment.







Practical demonstration session during 10-day advanced residential training  
for CRPs at Aquaculture Field School, Assam

## **Imprint**

### **Published by**

Deutsche Gesellschaft für Internationale Zusammenarbeit (GIZ) GmbH

### **Registered offices**

Bonn and Eschborn, Germany

### **Prepared under**

Sustainable Aquaculture for Food and Livelihood (SAFAL)

54(A), Banphool Path, Besides Lotus Apartment, Last Gate, Beltola, Guwahati, Assam, 781038, India

E: [info@giz.de](mailto:info@giz.de)

I: [www.giz.de/india](http://www.giz.de/india)

### **Responsible**

Pratap Sinha, Project Leader, SAFAL, GIZ India

Email: [pratap.sinha@giz.de](mailto:pratap.sinha@giz.de)

### **Author**

Dr. Jeherul Islam, Fisheries and Aquaculture Advisor, SAFAL, GIZ India and State Coordinator for North Eastern States, India, GIZ

### **Co-authors**

Pratap Sinha, Project Leader, SAFAL, GIZ India

Priyam Kakoti Bora, Communications Consultant for SAFAL, GIZ India

### **Content Review**

Sandeep Nayak, Advisor for Fisheries and Aquaculture, SAFAL, GIZ India; Bettina Renner, Junior Specialist for Public Relations, Monitoring & Evaluation, SAFAL, GIZ India; Nijira Basumatary, Project Assistant, SAFAL, GIZ India

### **Design and Layout**

Priyam Kakoti Bora, Communications Consultant for SAFAL, GIZ India

### **Photo Credits**

Baanyan Tree Productions Pvt. Ltd

GIZ is responsible for the content of this publication

On behalf of the

German Federal Ministry for Economic Cooperation and Development (BMZ)

As at

April 2025, Guwahati

Scan here to know more  
about the project

