

# PONT'S STRATEGIC FRAMEWORK 2020-2040

## Our Values



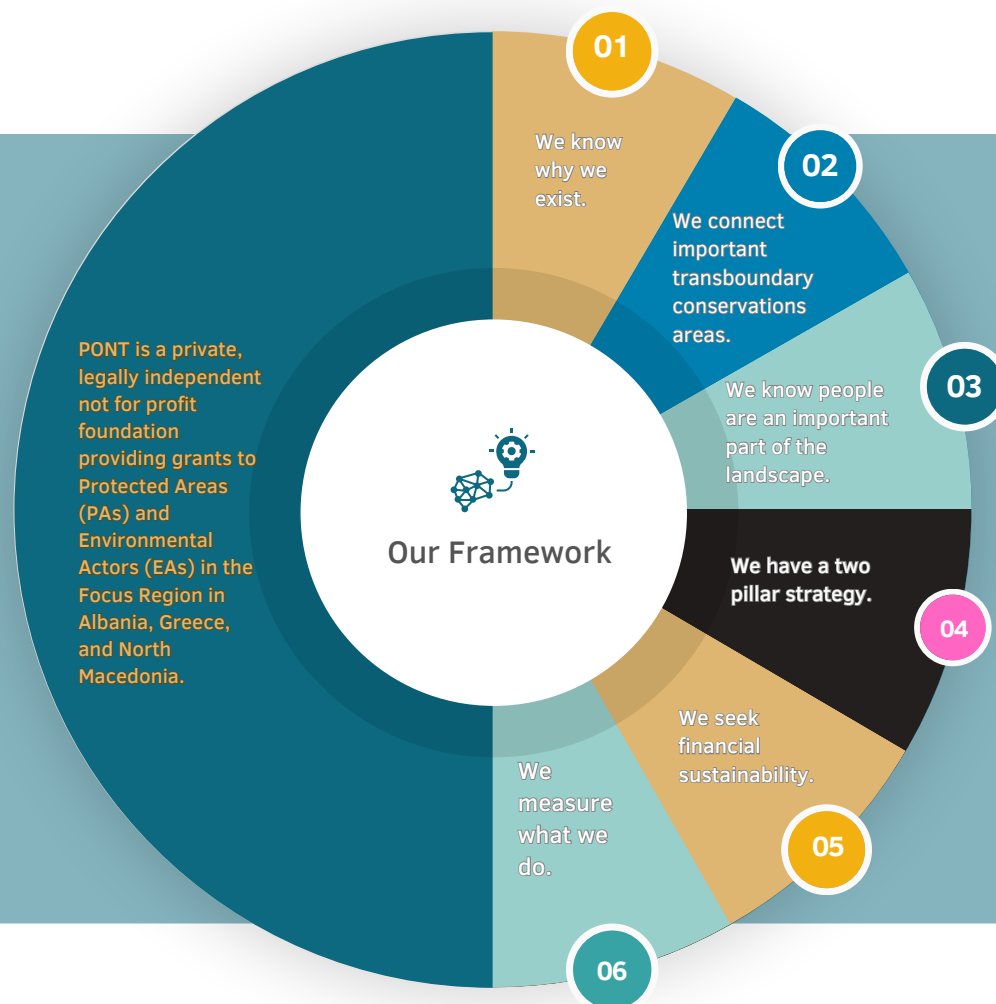
- Ownership by beneficiaries for funding, actions, and results;
- activities and pace according to skills and capacity;
- culture of learning by doing, allowing one to learn from mistakes;
- long-term (local) partnerships;
- conservation actions on the ground;
- support for local organisations;
- long-term with a focus on programmes rather than project driven;
- bringing science and citizens closer together;
- respecting traditional culture and knowledge;
- giving the younger generation a role to play.

## Our Vision

Transboundary conservation areas are reconnected and sustained as important biodiversity hotspots where people live and work in harmony with nature.

## Our Mission

Conserving nature for a sustainable future through long-term partnerships and financing.

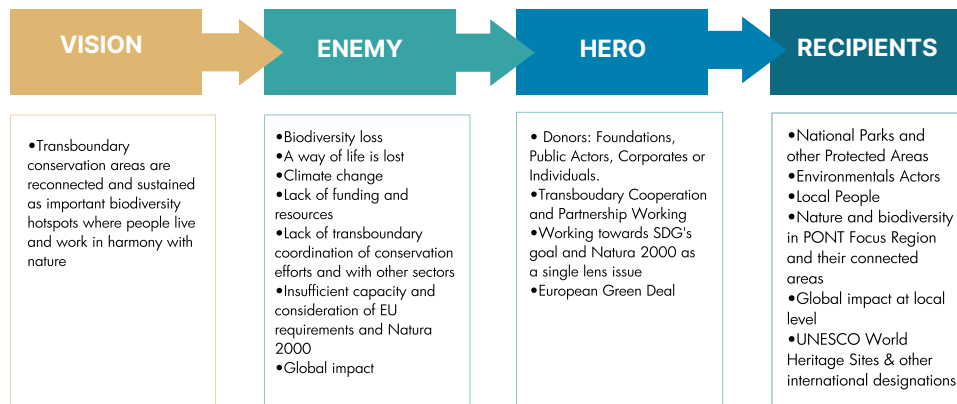


## Contributions to U.N. Sustainable Development Goals





## OUR HISTORY



Transboundary Prespa Lakes: European Biodiversity Hotspot. Many investments but lack of continuity and sustainable long-term financing

Prespa Ohrid Nature Trust (PONT was established). Solution = Conservation Trust Fund with focus on operational costs

Shared Service Office in Germany opened. Start-up work.

### PONT in 2023:

Long-term support to 10 PAs and 30 EAs  
(1 Director, 4 employees, 3 focal points, service providers)

2030

Vision is to finance up to 20 PAs and 40 EAs including Lake Ohrid Monument of Nature and Mavrovo National Park in North Macedonia

2040

Financing the minimum needs for our key partners in perpetuity

2023

2021

2021

Two geographical expansions

2018

2018

Day-to-day work routines;  
Strategy development; open calls for proposals  
Improvement of procedures

2017

May 2017

PONT Regional Programme Office in Tirana opened. No international conservation partners located in Focus Region. Being closer to the partners in the region! Development of manuals & first grants to PAs and EAs in Prespa

2000

2015

2016

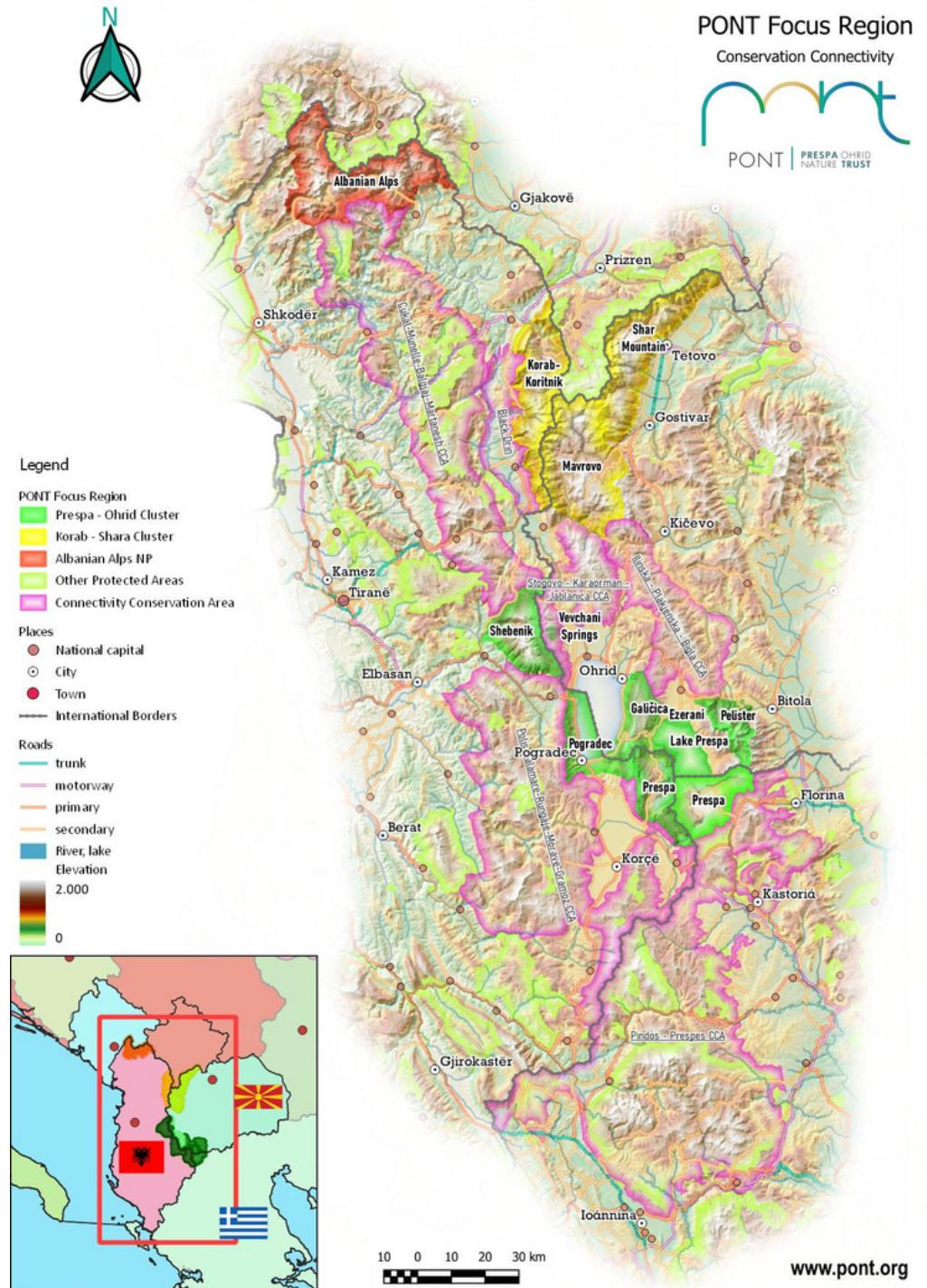
2000 - 2015

NOVEMBER 2015

## PINDUS MOUNTAINS MIXED FOREST ECOREGION

Landscape with many Protected Areas & international designations - Part of the European Greenbelt

The PONT Focus Region has exceptional habitat diversity, supporting viable populations of species including endemic and rare plants and animals. Connectivity corridors help consolidate the landscape elements to ensure species movement between areas under protection.



## PEOPLE & PLANET

PONT's grant-making strategy aims at incentivising diverse actors in the landscape to work together, at the national as well as transboundary levels, to reconcile competing social, economic, and environmental interests in order to achieve sustainable resource management.

Our future globally and at local level depends on us protecting and preventing the collapse of the natural systems that provide our food, clean water, clean air and stable climate. PONT supports the local communities to strike a balance between nature conservation priorities and ensuring an uninterrupted flow of the ecosystem services that underpin their well-being.

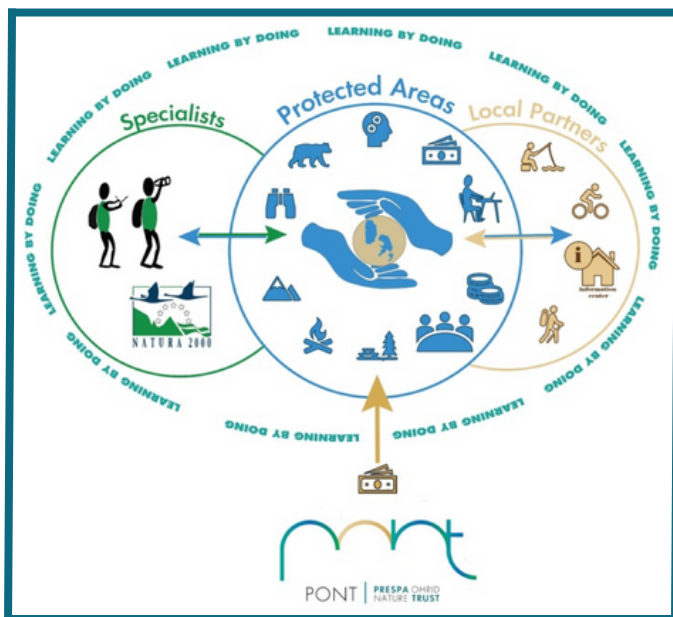


*People are an important part of the landscape*



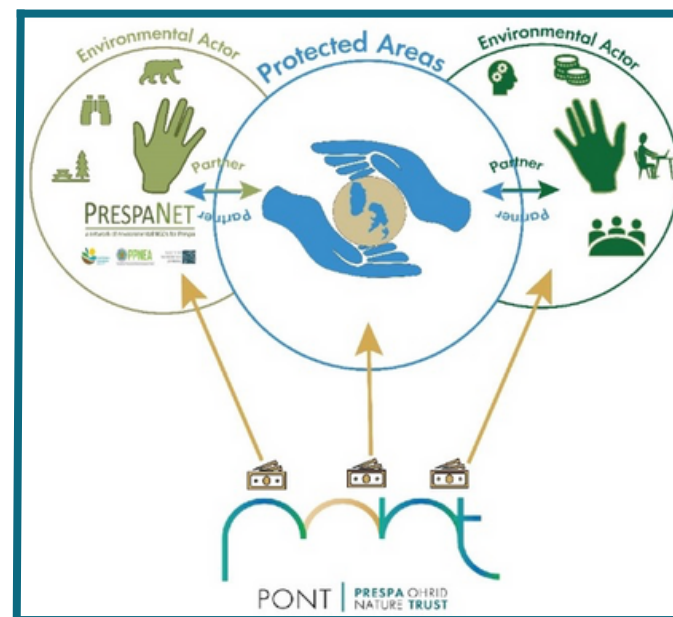
## OUR PILLARS

### Protected Area Grant Programme



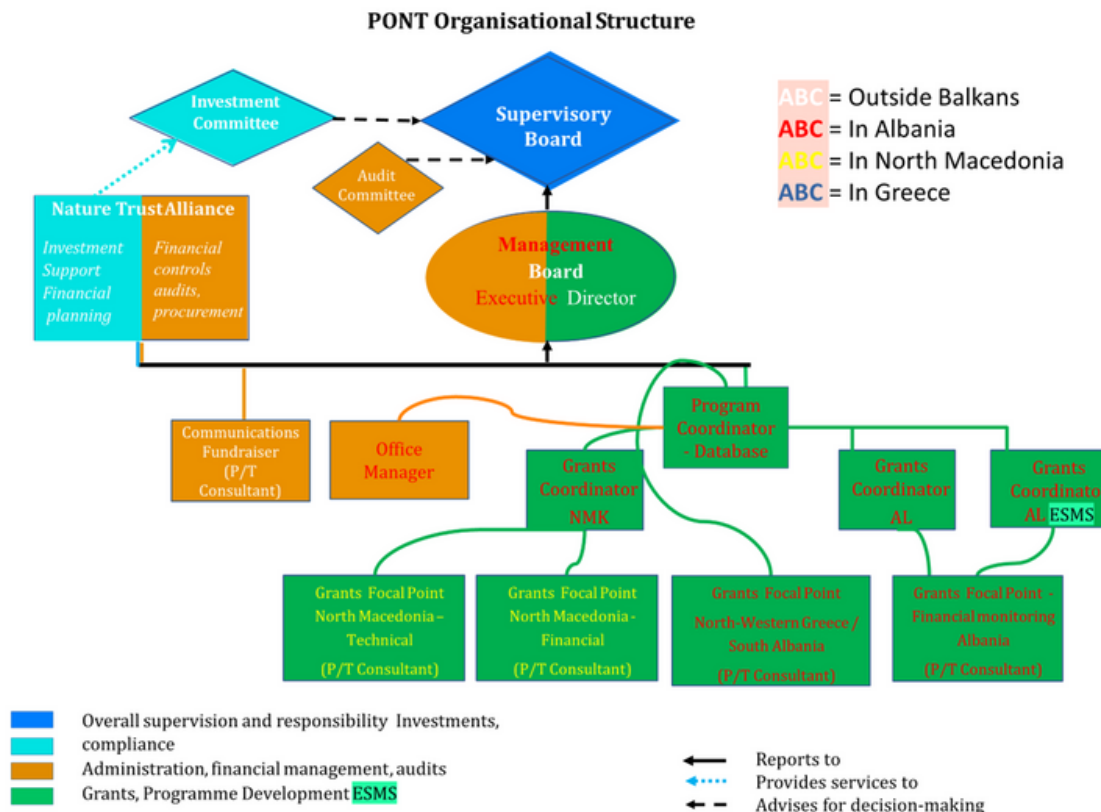
Transformation of the Protected Area system from project-driven to self-managed with increased management effectiveness according to European/ International standards.

### Environmental Actor Grant Programme



Transformation into a more resilient landscape with improved participation by local people and cooperation between partners (including transboundary cooperation).

## FINANCIAL MODEL & SUSTAINABILITY



We want to remain a neutral, lean and flexible learning organisation. We use a financial model to project how many actors we can support in the long-term (at least 10 years). By 2030, we hope to reach our ultimate goal to sustainably support up to 20 PAs and 40 EAs through high investment returns and successful fundraising.

### Thematically.

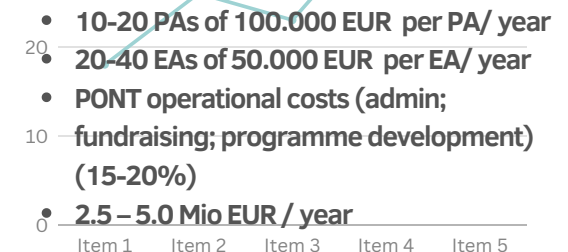
Scope to expand by linking Biodiversity Conservation with Climate Change and Connectivity Conservation; EU accession

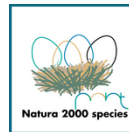
### Geographically.

Scope to expand from 11 up to 20 PAs in the ecoregion (add PAs in the upper catchment Aooos Vjosa; PAs in/or located next to Connectivity Conservation Areas)

### Long-term minimum needs.

To maintain this ecoregion programme:





## IMPACT



## MONITORING DATA

Impact indicators	Baseline	2023	Target 2032	Target 2040
<i>Territory (ha) of Protected Areas supported by PONT operating in line with international (IUCN) standards</i>	0	351.234	350.000	>400.000
<i>Number of strategically PONT financed partnerships between PAs and Environmental Actors (EAs)</i>	0	30	24	28
<i>Number of conservation actions benefiting priority Natura 2000 habitat types</i>	1	7	8	10
<i>Number of conservation actions benefiting priority Natura 2000 species</i>	9	58	60	80
<i>Number of conservation actions benefiting endemic species</i>	0	44	45	55
<i>Number of hectares of ecological corridors with strengthened management of biodiversity</i>	0	2.300	152.300	152.300
<i>Number of green businesses/initiatives supported</i>	0	30	38	48