



PANORAMA'S CONTRIBUTION TO CONSERVATION AND SUSTAINABLE DEVELOPMENT

2025 Storytelling Report

PANORAMA
SOLUTIONS FOR A HEALTHY PLANET

INTRODUCTION

[PANORAMA – Solutions for a Healthy Planet](#) is a global community where changemakers share, adopt, and scale up inspiring Solutions for a healthy planet. Our comprehensive **knowledge management approach** supports reflection, knowledge capture, knowledge organisation, sharing and dissemination. The approach is composed of:

- A knowledge management methodology for knowledge capture
- A repository of solutions available for replication and uptake
- An online platform and a range of social media channels for knowledge dissemination
- And advocacy and networking activities to increase uptake of solutions

In 2024, we commissioned a comprehensive, theory-based evaluation report which assessed the efficiency, effectiveness, relevance, impact and sustainability of PANORAMA as a whole. Therefore, we wanted to take a different approach with this report.

We are using **storytelling to tell our PANORAMA users and supporters how we contribute to conservation and sustainable development, and what difference it has made**, with a focus on the last five years. To do that, in the first chapter, we draw attention to other aspects of work that demonstrate how we elevate the voices and experiences of locally-based groups and organisations beyond hosting their solutions on our platform and sharing them via social media. The second chapter categorises how we are making a difference to a wide range of people and areas around the globe, and they are accompanied by a range of quotes from users and case studies with photos that humanise and localise change and impact against each of the identified categories of change.

The case studies use an outcomes harvesting approach and have a focus on positive deviance. They were put together using a range of methods (interviews, two online surveys and desk research). We thank all those people and the organisations included in this report, your stories of change are so inspiring!

HOW DOES PANORAMA CONTRIBUTE TO NATURE CONSERVATION AND SUSTAINABLE DEVELOPMENT?

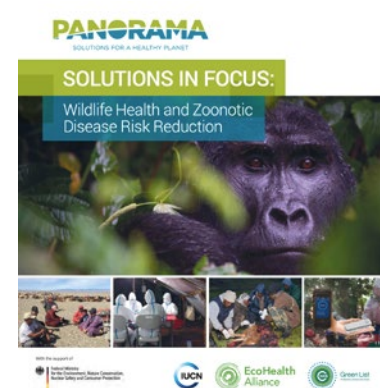
PANORAMA – Solutions for a Healthy Planet is a global community where changemakers share, adopt, and scale up inspiring Solutions for a healthy planet. Our comprehensive knowledge management approach supports reflection, knowledge capture, knowledge organisation, sharing and dissemination. The process yields solutions that demonstrate what has worked, how, and why, in effective environmental initiatives. We now have an open, [online global repository](#) of over 1,500 conservation and environmental Solutions.



Distribution of PANORAMA Solutions

A lot of effort goes into **elevating the voices and experiences of locally-based groups and organisations** beyond hosting their solutions on our platform and sharing them via social media see our [Facebook](#) and [LinkedIn](#) accounts. We produce highly visible and widely shared policy and practice briefs and publications based on meta meta-analysis of a range of PANORAMA solutions. Here are some examples:

[Wildlife Health and Zoonotic Disease Risk Reduction](#) (2022). IUCN



[The Great Blue Wall. Good practices for marine and coastal conservation in the Western Indian Ocean](#) (2022). IUCN



[Sustainable Tourism in Protected and Conserved Areas](#) (2022). IUCN



[Tech4Nature](#) (2022). IUCN



[Policy Impact of The Restoration Initiative on Forest and Landscape Restoration](#) (2024). IUCN.



2021

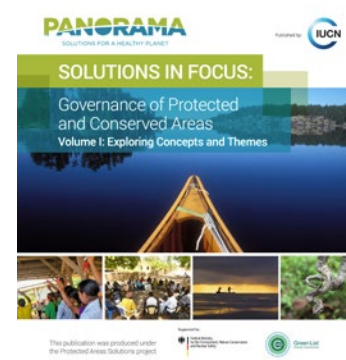
2022

2023

2024



[Solutions for development challenges: insights from protected and conserved areas](#) (2021). IUCN



[Governance of Protected and Conserved Areas. Volume I: Exploring Concepts and Themes](#) (2022). IUCN



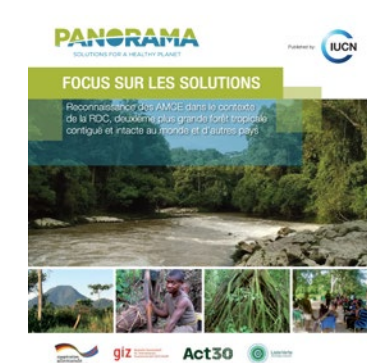
[Governance of Protected and Conserved Areas. Volume II: Actions and Approaches](#) (2022). IUCN



[Key Themes for Ecosystems-based Adaptation](#) (2022). GiZ



[Leverage points and levers of inclusive conservation in protected areas](#) (2023). Ecology and Society 28(4):7.



[Reconnaissance des AMCE dans le contexte de la RDC, deuxième plus grande forêt tropicale contiguë et intacte au monde et d'autres pays](#) (2024). IUCN

Another way **we increase the visibility and uptake of solutions** is by showcasing them at high-level policy events, utilising the PANORAMA methodology to run global awards, and facilitating funding opportunities. Here are some examples:

In addition to running an event at the Nature Positive Pavilion, and a side event at the UN Biodiversity Conference (CBD COP15) in Montreal, Canada; we hosted an off-site reception, involving representatives of several PANORAMA partner organisations, collaborators and current and potential donors.



[Malawi Restoration Championship](#), which celebrated community-based activities that are restoring the landscape to regain ecological integrity and enhance human



[6th GLF Investment Case Symposium Finance for Nature 2023](#). PANORAMA connected Solution providers with potential investors and funding opportunities.



[7th Assembly of the Global Environment Facility](#): we hosted a side event with speakers from GEF Secretariat, GEF STAP, UNDP, IUCN and PANORAMA solution providers.



2021

2022

2023



The [award](#) recognises and celebrates innovative, integrated approaches that successfully conserve nature and make gains in human health, climate change mitigation and adaptation, and sustainable land management. The solutions use PANORAMA's methodology and are now on our platform. Four winners were awarded a prize of 10,000 USD each.



We ran a [virtual side event](#) during the UN High-Level Political Forum on Sustainable Development 2022, as part of the official programme. The event presented specific solutions on gender (SDG5) and partnerships (SDG17). It also provided an analysis of solutions relating to protected areas and how they support human needs, to achieve development and conservation outcomes in "win-win" scenarios.

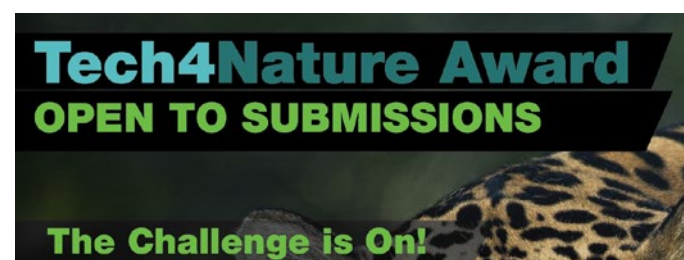


We ran on-site events at the 2nd Asia Parks Congress in Kota Kinabalu, Malaysia, as well as the 1st [Africa Parks Congress](#) in Kigali, Rwanda.



[UNFCCC COP28 Side Event](#). We provided insights on solution synthesis based on [Ecosystem-based Adaptation \(EbA\)](#) solutions, as well as solution presentations from PANORAMA solution providers.

The [Tech4Nature Award](#) received applications submitted as Solutions on PANORAMA. It builds on the success of the PathFinder Award. Winners will receive funding to help scale-up their solutions



We advised on the design of the [Knowledge Management for Biodiversity \(KM4B\)](#) Asia regional workshop. We also supported the [KM4B Africa](#) workshop. Both events led to a first-of-its-kind continental-level roadmap.



2024



We ran a series of events at the [16th UN Biodiversity Conference](#) (CBD COP 16) to promote PANORAMA solutions. This complemented the two "Solution in Focus" publications for this conference.



PANORAMA will host several events at the upcoming [IUCN World Conservation Congress](#) in Abu Dhabi on October 9-13, 2025, highlighting proven Solutions, fostering peer-to-peer learning, and strengthening.



Key to our success is a collaborative network of diverse **partners**, each contributing significantly in their area of expertise. Together with almost 1,100 individual Solution Providers from a wide range of institutions, they form PANORAMA's backbone. Moreover, there is a growing cohort of PANORAMA Ambassadors. The programme began in 2022 and has been recruiting individuals from around the world to advance the global knowledge management movement and establish a network dedicated to scaling up success in biodiversity conservation and sustainable development. Find out more about this programme [here](#).

**WHAT DIFFERENCE DOES
PANORAMA CONTRIBUTE TO?**

Over the last years, we have conducted interviews, online surveys and desk research to understand whether, and how, PANORAMA is contributing to any change, using an outcomes harvesting approach with support from [Nexus Evaluation Ltd](#). We now have a volume of case studies and stories that Nexus has analysed to identify the main patterns and trends as follows:



Many organisations lack a knowledge management methodology that enables them to **reflect** on what makes an initiative effective, how it can be adapted or scaled up, or a platform **for sharing this knowledge** widely with other stakeholders. PANORAMA fills this gap, and its approach can be applied to different topics and sectors.



We help PANORAMA users stay up to date with innovations and solutions in their field of expertise, serving as a source of **inspiration** that contributes to conservation and sustainable development efforts.



Publishing a PANORAMA Solution **increases the confidence and global profile** of organisations and their work, which can lead to more **funding and scale-up** of solutions.



PANORAMA content supports **educational and research endeavours**, contributing to the development of new conservation and sustainable development practitioners as well as evidence-based decision-making and practice.



In many cases, we work closely with governments and local partners to achieve **conservation and sustainable development**, offering in-depth and tailored knowledge management and implementation support.

The following pages provide examples against each dimension of change.



Examples of how PANORAMA is used for knowledge capture and wide dissemination. Plus examples of how our approach applies to different topics and sectors.

Participatory mapping with local community members in Fuxing Tribe_Xinshe SEPLS, Hualien County (Taiwan)



For years, we have been working closely with government, local and indigenous communities to implement policies focused on nature conservation, forest protection, recreation and livelihoods. But we never used to pause, reflect and document what worked well, why or how it could be adapted. We did that [five years ago](#) via PANORAMA, and with the help of a consultant who visited many sites. We found it very valuable, and this year we are doing it again, but this time by supporting the communities to do it themselves across 8 regional sites.

Paulina G. Karim presenting at the PANORAMA side-event, COP16 (2024)



PANORAMA invited us to present our solution at a side event they organised at the 16th Conference of the Parties to the Convention on Biological Diversity (CBD), held in Cali, Colombia, in 2024. This was the first time we were able to represent Taiwan formally in such a global space, and something that meant a lot to us and to our government representatives attending this event.

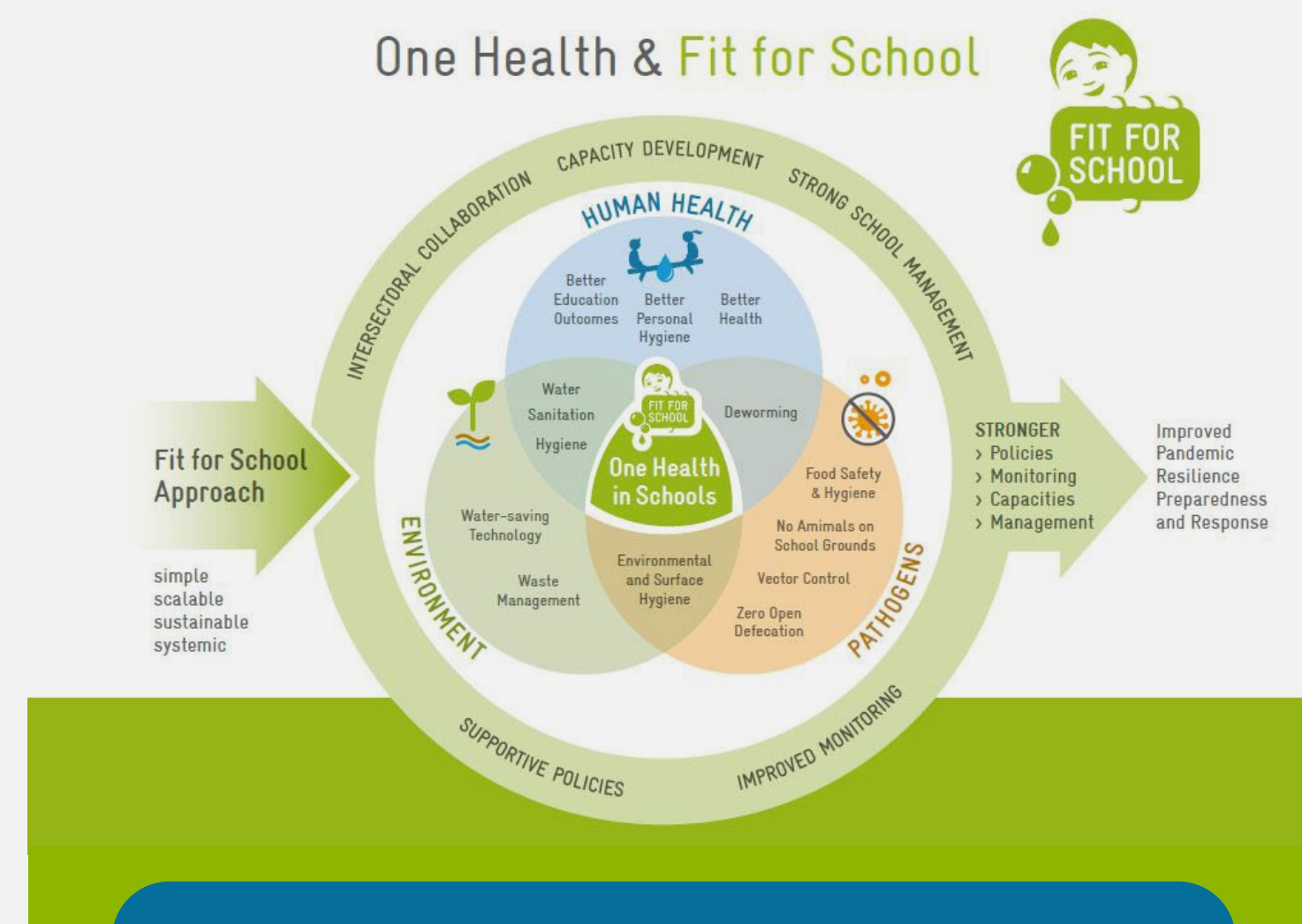
Paulina G. Karim, PhD, Assistant Professor,
College of Environmental Studies and Oceanography,
National Dong Hwa University

Group handwashing (GIZ Fit for School)



The [Fit for School Initiative](#) for Africa, in collaboration with partner organisations and educational institutions in Malawi, led to capacity development for pandemic-resilient schools in African countries, particularly focusing on improving WASH infrastructure and hygiene practices to combat the COVID-19 pandemic. It had significant benefits in terms of public health by promoting hygiene practices, reducing the spread of infectious diseases, and enhancing overall education quality and continuity. This is a good example of how the PANORAMA's approach is highly applicable to other topics and sectors.

Fit for School One Health Concept (GIZ)



PANORAMA contributed to this change by providing a platform for sharing and replicating successful approaches like the Fit for School Initiative. By highlighting this initiative and facilitating knowledge exchange through partnerships and networks, PANORAMA encouraged the adoption of proven strategies and best practices, leading to tangible improvements in school infrastructure, hygiene education, and pandemic preparedness across African countries

”

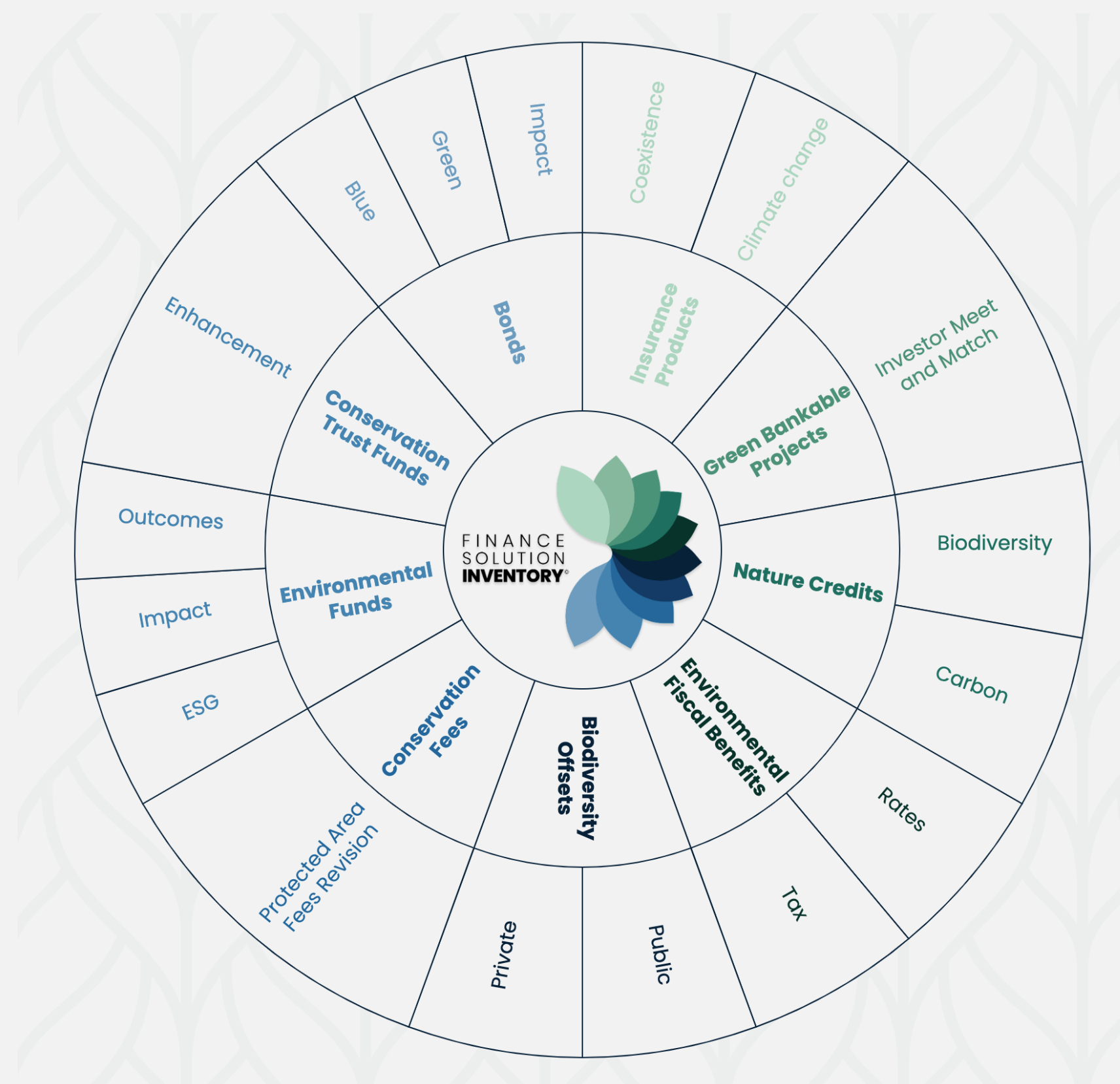
Tina Kanathigoda, Policy Advisor, Water Sanitation and Hygiene at Deutsche Gesellschaft für Internationale Zusammenarbeit (GIZ) GmbH.

[The Finance Solution Inventory](#), by the Sustainable Finance Coalition, is a first-of-its-kind, African-led knowledge hub on sustainable finance solutions that are designed and targeted toward conservation impact. It showcases solutions from a diverse and inclusive network of collaborators and contributors.

Candice M.D. Stevens (Founder and CEO of Sustainable Finance Coalition and Co-Chair for IUCN WCPA Sustainable Finance Specialist Group) explained that the inventory uses PANORAMA's building blocks logic for documenting and communicating ingredients of success that can support replication and adaptation. This demonstrates how PANORAMA's methodology can be applied to other topics and sectors.

Candice first started to use PANORAMA a decade ago, when she published a [solution](#) on the platform, which first exposed her to the building block methodology. She was later a Pathfinder Award winner in 2018, and then went on to found the Sustainable Finance Coalition in 2019.

Candice M.D. Stevens,
Founder and CEO of Sustainable Finance Coalition
and Co-Chair for IUCN WCPA Sustainable Finance Specialist Group.



The Finance Inventory Wheel by Sustainable Finance Coalition



The act of breaking down work into ‘Building Blocks’ [a cornerstone of PANORAMA’s methodology] and explaining what made it a success in simple terms gives you a mechanism to reflect... And to go back to the solutions every so often to update and reflect



***Mirjam de Koning,
Executive Director at PONT
(Albania)***



PANORAMA’s agile and accessible format allows us to document our work and facilitates the exchange of information with practitioners, researchers and potential donors in different languages around the world.



***Florencia Zapata,
Institutional Development Director
at Instituto de Montaña
(Peru)***



Examples of how PANORAMA serves as a source of inspiration that contributes to conservation and sustainable development efforts.

Local women from the village of Nyakinama involved in the project (Rwanda)



Emma explains how the microfinancing approach works in their community: “The money women make out of the tours and the sale of their handicrafts is divided into two parts: one for their personal use and to support their independence. The other remaining half goes to a collective savings account they opened at a local bank that is used in emergencies, when there are no guests or the harvest is poor...The implementation is going well, and the women really appreciate it.



Emma Isheja, Field Officer at Red Rocks

Rwanda's Volcanoes National Park (VNP) is situated in the Virunga Mountains, one of the most important regions for biodiversity conservation in Africa. Red Rocks Rwanda introduced a [community-based tourism entrepreneurship programme](#), working with communities around the village of Nyakinama.

After publishing their solution on PANORAMA, they came across another solution that used a microfinancing approach, which they decided to implement as part of their project, according to Emma Isheja, Field Officer at Red Rocks Rwanda.

The programme supports conservation in the VNP by reducing dependency on forest resources and increasing economic status at the same time.



One of the mangrove forest-dependent communities (Efut Abua) in Odukpani LGA, Cross River State, Nigeria. (Obondha)

Obondha-wani Oguni is the founder and Director of AfERA Alliance in Nigeria and a dedicated conservationist and advocate for a rights-centred approach to environment and climate action.

He has used PANORAMA as source of inspiration. "The platform opened up a world of possibilities," Obongha remarks. These case studies serve as a rich resource for him, providing concrete examples and methodologies that can be adapted and applied to his local context. "It's like having a global toolkit at your fingertips," he explains.

He also leverages the platform for policy development. By analysing various solutions, he gains a deeper understanding of what has worked in different environmental contexts. This knowledge is invaluable in shaping effective and sustainable environmental policies in his region. "Each solution on PANORAMA is a lesson in environmental stewardship," he says, highlighting how the platform has been instrumental in informing his approach to policymaking.



**Obondha-wani Oguni,
Founder & Director of AfERA**



Village rangers in action in Hin Nam No National Protected area (GiZ project).

Deutsche Gesellschaft für Internationale Zusammenarbeit (GIZ) GmbH implemented a project in [Hin Nam No National Protected Area](#), in Lao PDR. It improved the management effectiveness of the 82,000-hectare area by 13% through better governance and management structures and resourcing.

After five years of successful implementation, they decided to share it with others via PANORAMA.

Since then, other protected areas in the region have been inspired to adopt some building blocks of the management structure of Him Nam No National Protected Area, creating a positive ripple effect that has been enabled, in parts, by the PANORAMA approach

”



**Mirjam de Koning, then Project Director at GiZ.
Now Executive Director at Prespa Ohrid Nature Trust (PONT)**



PANORAMA solutions related to conservation in the Democratic Republic of Congo helped guide the development of our strategy for nature conservation outside protected areas.

”

Héritier MILENGE KAMALEBO,
*Executive Secretary at Jeunes
et Champions en Conservation
de la Nature (JCCN).*
(Democratic Republic of Congo).



We have benefited immensely from published solutions in landscape and ecosystem restoration for improved livelihoods.

”

Asetto Jacobs,
*Programme Manager at
The National Alliance of Community
Forests Associations (Kenya).*



I read through newsletters to understand what ecosystem conservation trials are taking place in different parts of the world, and nitpick which one can be easily replicated at a local level.

”

Isaac Nduta Mureithi,
*Research Fellow for the
African Wildlife Foundation.*
(Kenya)



PANORAMA provides curated lessons and successful key interventions for users to find potential solutions based on similar criteria.

”

Hesti Widodo,
*Senior Programme Manager
at the Coral Triangle Centre
(Indonesia).*



Examples of how PANORAMA increases the confidence and global profile of organisations and their work, leading to more funding and scale-up of solutions.

Protected Area of Guararú (SEMAM) Brazil.



It's participatory governance was recognized as a PANORAMA solution. As a result, the team was invited to meetings and conferences, which eventually resulted in the creation of a second municipal protected area, which, together with Guararu, now forms an important ecological corridor. The team testified that being recognized by PANORAMA majorly contributed to this success.



Cleiton Santos, Manager of the Municipal Protected Area of Guararú (Brazil)

The Prefeitura Municipal de Guarujá implemented a [project](#) focused on preserving the region's natural ecosystems, protecting endemic species, encouraging scientific research, conserving land cover, environmental services, and environmental and cultural heritage, and promoting sustainable tourism. The situation warranted an urgent and imperative plan to create a protected area to prevent clandestine occupations and the establishment of criminal networks, illegal deforestation, predatory hunting, pollution, and environmental degradation.



Our partnership with Panorama and IUCN through our solution has increased our trust, credibility and raised our profile. And we have been able to attract [new] partners... for our Conservation and Entrepreneurial Solutions such as: UNDP (Youth for Business Innovation and Entrepreneurship Facility), WWF (Through the South Queen Elizabeth National Park Hub), The Innovation Village (Next Wave Program - with funding from MasterCard Foundation), and currently, we are partnering with the Uganda Wildlife Authority (UWA) on a Project to remove Invasive Species from Queen Elizabeth National Park.

”

Mushana Ivan,
*Executive Director at
Tree Uganda Academy
(Uganda).*



PANORAMA Solutions enabled Instituto de Montaña to showcase successful projects and methodologies that positively impact mountain ecosystems and communities...opening up new opportunities for our organisation to scale up our work. For example, in 2021, representatives from the World Monument Fund learned about our projects through PANORAMA and asked us to submit a proposal, which was successful and allowed us to obtain funding for a new initiative.

”

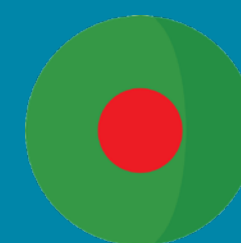
Florencia Zapata,
*Institutional Development
Director at Instituto de Montaña
(Peru)*



I really loved how it served as a really good voice for the community here, by featuring our solution on such a global platform that everyone around the world can read. It acted as a voice for them.

”

Emma Isheja,
*Field Officer at Red Rocks Rwanda
(Rwanda)*



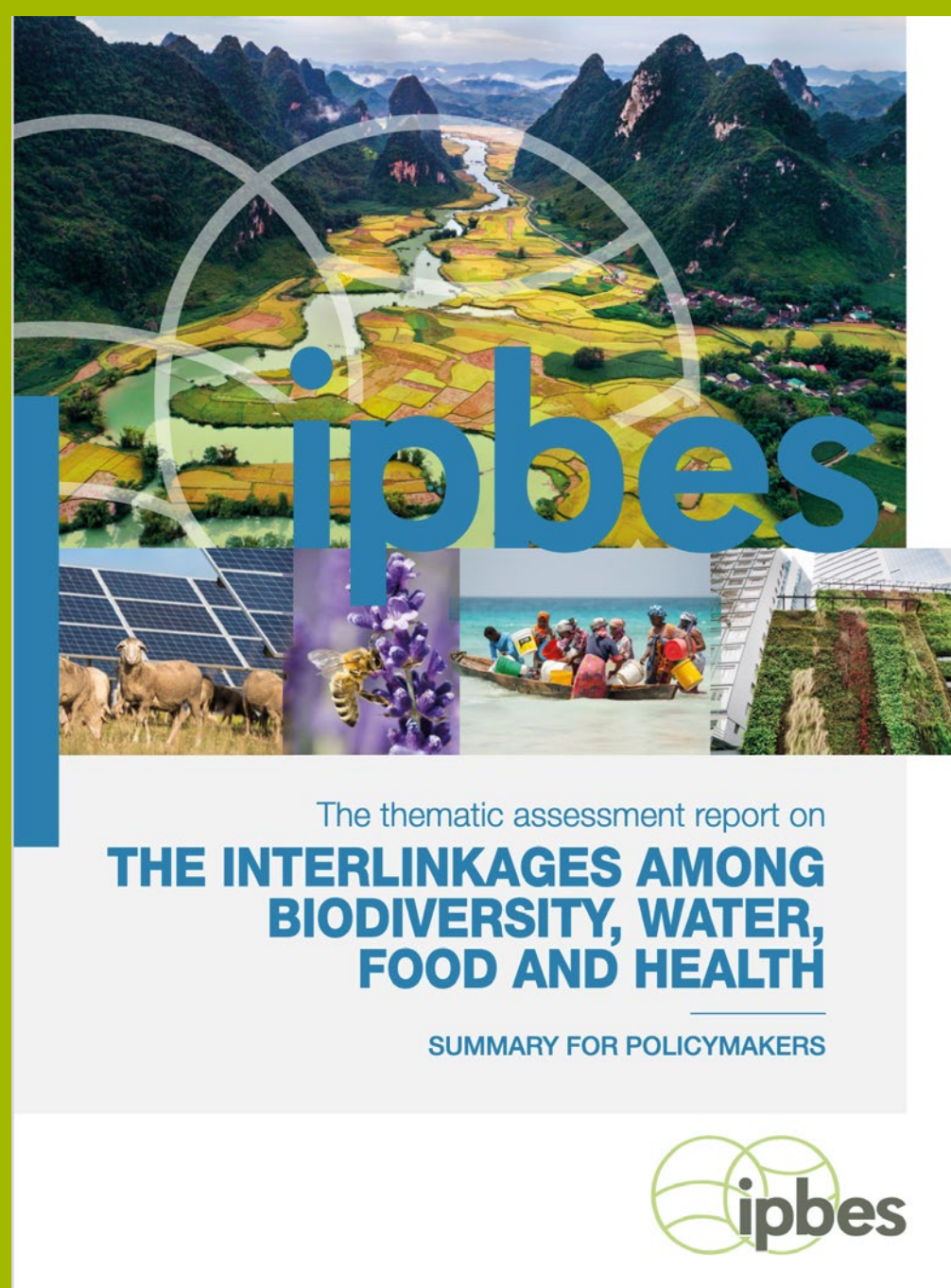
PANORAMA is a good knowledge management tool. We have used it not just to document our conservation solution and share it with the scientific community, but also to communicate with local policy makers and to fundraise with great success. We are now starting a new project focused on plastic issues and continuing work in St Martin's marine protected area and adjacent areas

”

A B M Sarowar Alam (Dipu),
*Programme Manager,
Species and Habitats at IUCN
(International Union for Conservation
of Nature), Bangladesh*



Examples of how PANORAMA content supports educational and research endeavours, contributing to the development of new conservation and sustainable development practitioners as well as evidence-based decision-making and practice.



The “[IPBES Nexus Assessment: Summary for Policymakers](#)” (June 2025) is a report on the interlinkages between Biodiversity, Water, Food, and Health produced by the Intergovernmental Science-Policy Platform on Biodiversity and Ecosystem Services. “Some of the evidence used for this report was drawn from approximately 100 PANORAMA Solutions. And we plan to continue using PANORAMA for the next report.”, told us one of the co-authors, Paulina G. Karim, PhD, Assistant Professor, College of Environmental Studies and Oceanography, National Dong Hwa University.

IPBES is an independent intergovernmental body comprising 150 member Governments. Established by Governments in 2012, IPBES provides policymakers with objective scientific assessments about the state of knowledge regarding nature and the contributions it provides to people, as well as options for actions to protect and sustainably use these vital natural assets.



I use it to help my students become aware of various possibilities/options and hopefully inspire them.



Abigail Mary Moore,
Lecturer at Hasanuddin University
(Indonesia)



Examples of how we work closely with governments and local partners to achieve conservation and sustainable development, offering in-depth and tailored sophisticated knowledge management and implementation support.

A sponge farmer in Zanzibar, Tanzania (marinecultures.org)



PANORAMA contributed to this change by providing a platform for knowledge exchange and collaboration. It facilitated the sharing of successful sponge farming solutions from Zanzibar, which were adapted to the Tunisian context through discussions, presentations, and field visits during an evaluation trip. PANORAMA's network and resources supported the identification of reliable partners, funding opportunities, and necessary permits for the project.

”



**Christian Vaterlaus, Co-Founder,
Active Member Switzerland / Zanzibar
at marinecultures.org (Tanzania).**

marinecultures.org, in collaboration with the Tunisian Institute of Marine Sciences and Technology INSTM, marinecultures.org, and local communities in Tunis, Zarzis, Djerba, and Kerkenah implemented a [community-based aquaculture and marine protection solution](#) that addresses poverty reduction in Zanzibar for its coastal communities through a more sustainable management of their natural resources, additional income, and consequently, a better quality of life.

It promoted sustainable economic growth, reduced environmental pressure and threats to marine life and other natural wildlife, improved public health and strengthened the economic and social status of women.

The marine protected area in Kenya (Des Bowden)



This transformation was inspired by a PANORAMA solution published in 2018...And PANORAMA played a key role in facilitating knowledge exchange, providing tools and templates, and fostering peer-to-peer learning between Oceans Alive Trust, Kuruwitu Conservation & Welfare – CBO, and the Kuruwitu Beach Management Unit (K-BMU). Through its platform, PANORAMA enabled the sharing of best practices, lessons learned, and guidance on navigating regulatory challenges. This collaborative approach supported the development and implementation of the first official Kuruwitu CMA plan, highlighting the platform's contribution to scaling up successful conservation initiatives.

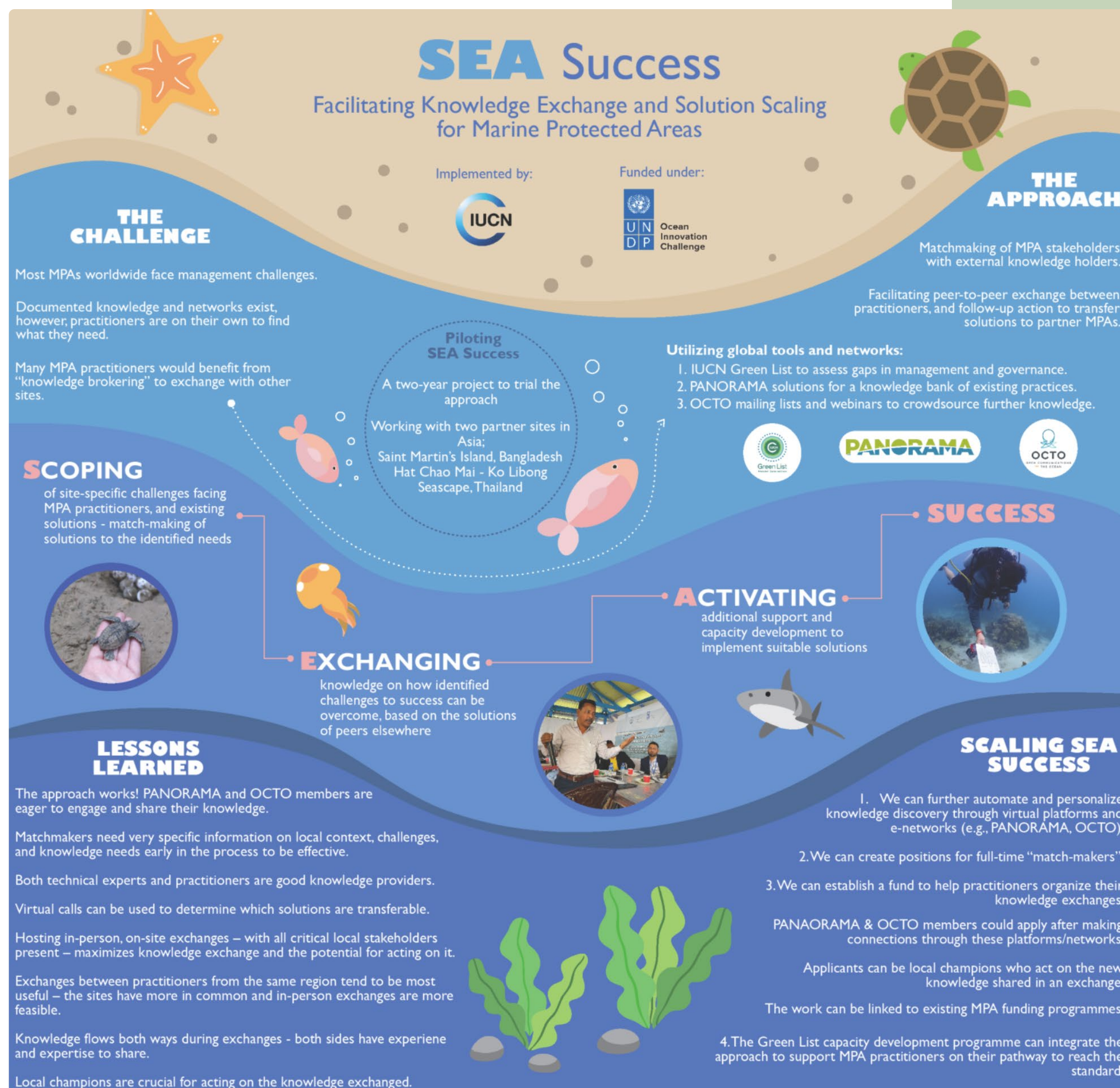
”



**Des Bowden, Founder,
Oceans Alive Trust and Kuruwitu Conservation
and Welfare CBO.**

Kuruwitu Conservation and Welfare Association (KCWA) was set up in 2003 by members of the community to address over-fishing and the effects of climate change. In 2005, they took the unprecedented step of setting aside a 30-hectare Marine Protected Area (MPA), the first coral-based [Locally Managed Marine Area \(LMMA\) in Kenya](#).

This eventually led to the first Co-Management Area (CMA), which allowed for greater community engagement, improved governance structures, enhanced conservation efforts, and the promotion of socio-economic benefits for coastal communities.



The [SEA Success](#) is a pilot project that drew from the networks and knowledge banks of PANORAMA and Open Communications for the Ocean (OCTO). The International Union for the Conservation of Nature (IUCN) and OCTO facilitated knowledge exchanges that supported the replication of marine conservation solutions for two protected areas, one in Thailand's Hat Chao Mai-Ko Libong (HCM-KL) Seascape, a Ramsar site in the Andaman Sea, and the other for the island of St. Martin in Bangladesh, the nation's only recorded coral.

"We learned some techniques and participatory approaches, which we adapted to our Thai context", remarked Adirake (Rake) Markphol, Marine and Coastal Programme Officer (IUCN). He added, "PANORAMA is a good platform and communication tool for fundraising. We plan to publish another solution with them".

And the approach is being replicated for the National Biodiversity Strategies and Action Plan (NBSAP) knowledge exchange project (see details of this in the next pages).

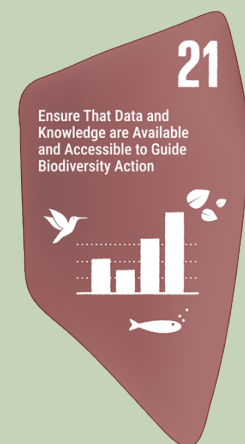
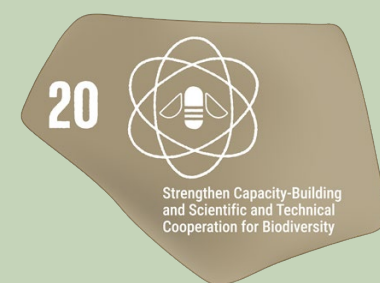


Kunming Montreal

GLOBAL BIODIVERSITY FRAMEWORK

Our sustained presence and advocacy work in the Convention of Biological Diversity (CBD) over the last decade led to a [Memorandum of Understanding](#) with the CBD Secretariat in 2022, positioning PANORAMA as a knowledge management partner for the implementation of the Kunming-Montreal Global Biodiversity Framework (GBF). Furthermore, PANORAMA was formally recognised in a decision from the [15th Conference of the Parties](#) to the Convention (COP 15) as “supporting the implementation of GBF through knowledge generation, management and sharing for effective biodiversity planning, policy development, decision-making, implementation, transparency and responsibility”. Moreover, one of our PANORAMA Coordinators has been serving as an appointed member of the CBD Informal Advisory Group on Technical and Scientific Cooperation (TSC-IG) – furthering the contribution we make to these global efforts.

All of the above are formal recognitions that PANORAMA significantly and directly contributes to GBF goal D, “Invest and collaborate”, and targets 20, 21 and 22, as well as the GBF Knowledge Management Strategy. We also contribute indirectly to all other GBF targets. PANORAMA is now intensively working with countries, tailoring our approach to national needs and priorities to further conservation and sustainable development.



Signing of a Memorandum of Understanding with the CBD





Approach of the NBSAP knowledge exchange project

In 2024, we started to work closely with governments under the umbrella of the [National Biodiversity Strategies and Action Plans \(NBSAP\) Accelerator Partnership](#), applying a 4-step methodology that was first piloted under the SEA Success project: Scoping – Exchanging – Activating – Success.

We first seek to understand (“scoping”) shared priorities from NBSAPs of several countries in a region to derive joint “learning topics”. We then match these learning needs with existing knowledge, including suitable Solution case studies from PANORAMA. Then, we bring together government representatives, experts, civil society, and local communities in each region for in-person events to share lessons learned, identify collaboration opportunities, address common obstacles, and shape informed actions for advancing NBSAP implementation (“exchanging”).

Two of these events have already taken place: oneThe first of these regional events was held in [Namibia](#) with several African countries, and another in Indonesia with ASEAN member states. The third and final one was , to be held in Peru in September, will bringing together several Latin American countries. The PANORAMA methodology guided the design of these events, with the presentation of Solution case studies, discussions around their replicability, participants making pledges to apply Solution “building blocks” in their own work going forward, while also documenting their own Solutions in “write-shop” sessions.



Photo: NBSAP event in Indonesia, GIZ

In a 3rd step (“activating”), we seek to mobilize additional support for the implementation of solutions; while finally disseminating new success stories emerging from the process, and supporting continuous knowledge sharing around the priority learning topics (“success”).

PANORAMA now features on the NBSAP accelerator website, in the [good practice](#) database section.



LOOKING AHEAD

PANORAMA has a new **governance model**, and we are excited to review our community and partnership model to make it more flexible and responsive to emergent needs and changes.

Details to be announced in due course.

In the previous section, we detailed our collaboration with the Secretariat of the Convention of Biological Diversity and GiZ, as part of the NBSAP Accelerator Partnership, which has positioned PANORAMA as a key partner to support the implementation of the Kunming-Montreal Global Biodiversity Framework. We hope to expand these activities in the coming years.

We recently launched a new **mobile app** and a **multilingual translation** tool that will allow PANORAMA content to be read in 14 languages – this should help improve accessibility, inclusivity and use. We are also continuously sensing, testing and improving. As a result, **our approach has become more sophisticated**. Our events and convenings were broad – both in terms of theme and geographic focus. Nowadays, we put more emphasis on identifying knowledge needs while focusing on specific countries and individuals, and identifying relevant experts while ensuring they are adequate to support the process, before finally facilitating an in-depth knowledge exchange workshop. Those workshops often involve field trips with an on-site demonstration of solutions and a selection of relevant PANORAMA Solutions. At the end, participants develop an action plan for the implementation of biodiversity solutions. Going forward, we will follow up more closely on knowledge uptake and support needed to do so. The previous section provided an example of this model, with the SEA Success project.

There is a lot of demand for our latest in-depth and tailored knowledge management approach that is helping achieve global biodiversity commitments, as demonstrated by this report.

But **more is needed to meet the demand. Please reach out if you would like to explore how you can support us!**
contact@PANORAMA.solutions

PANORAMA

SOLUTIONS FOR A HEALTHY PLANET

This report was funded by



Implemented by



This report was prepared by



NEXUS
EVALUATION
LTD

www.nexusevaluation.co.uk

Graphic Design by Estudios Angular

ANGULAR

www.angular.mx

