



2020

ANNUAL REPORT

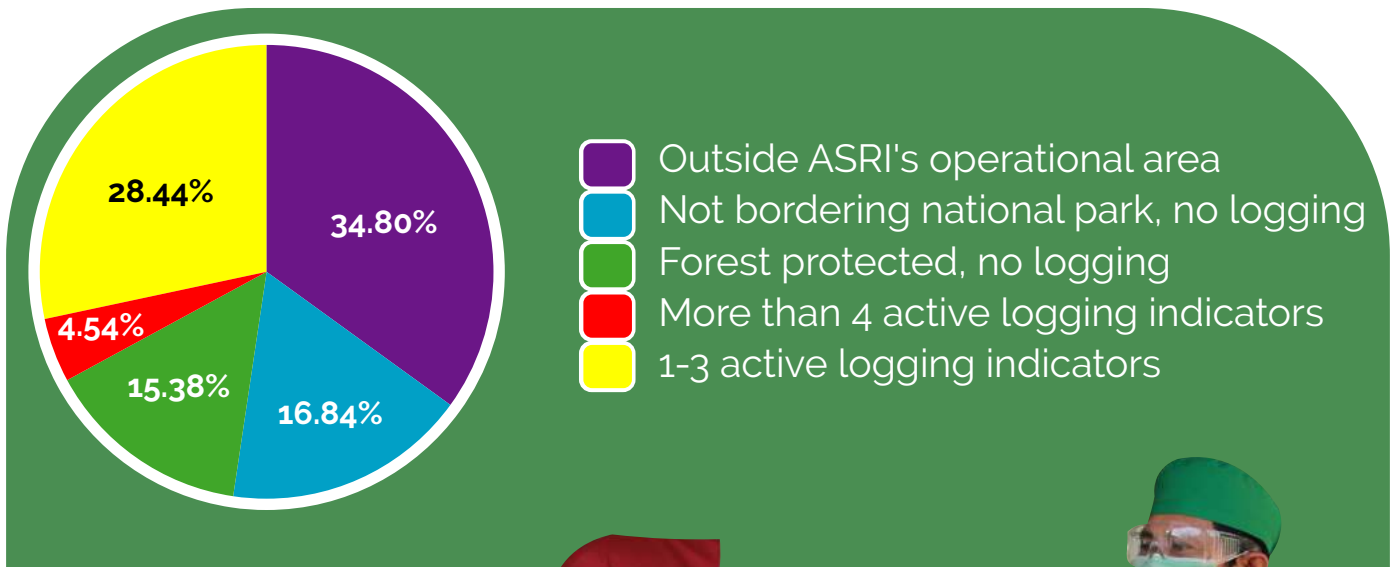
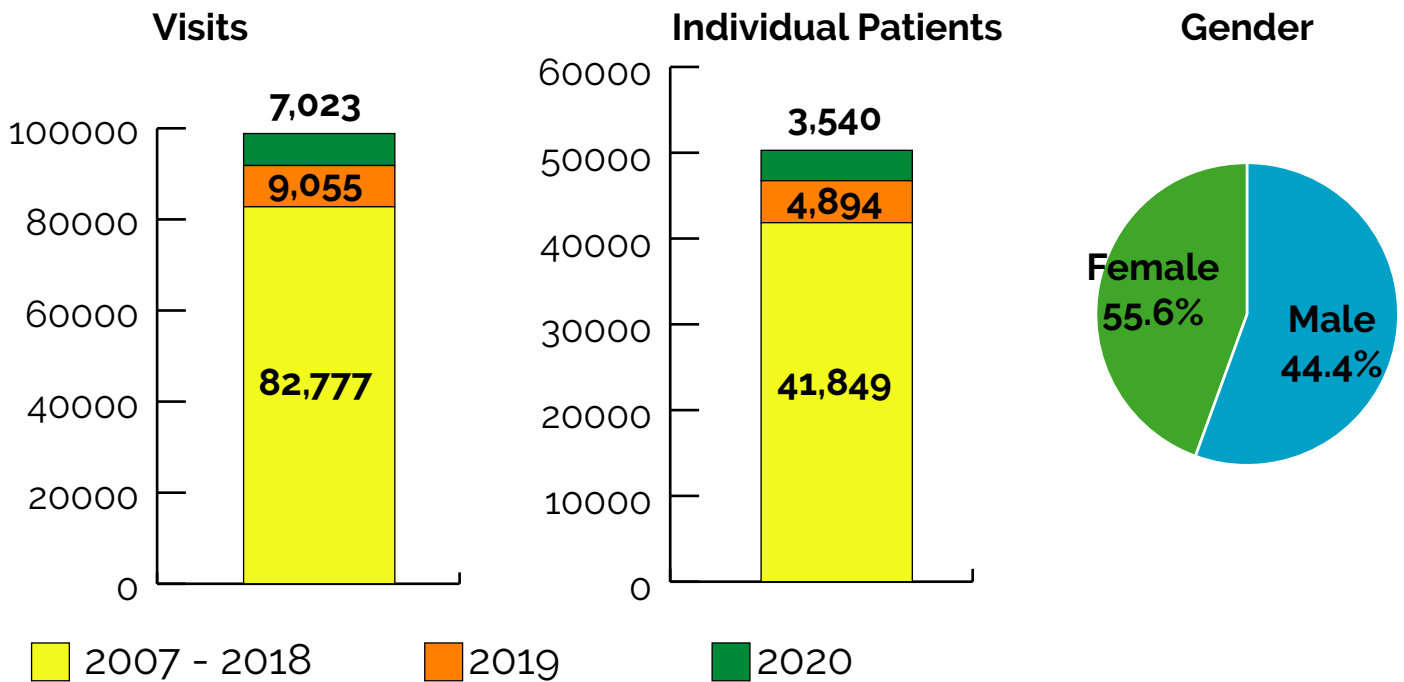
Alam Sehat Lestari



HEALTH

Visit and Diagnoses

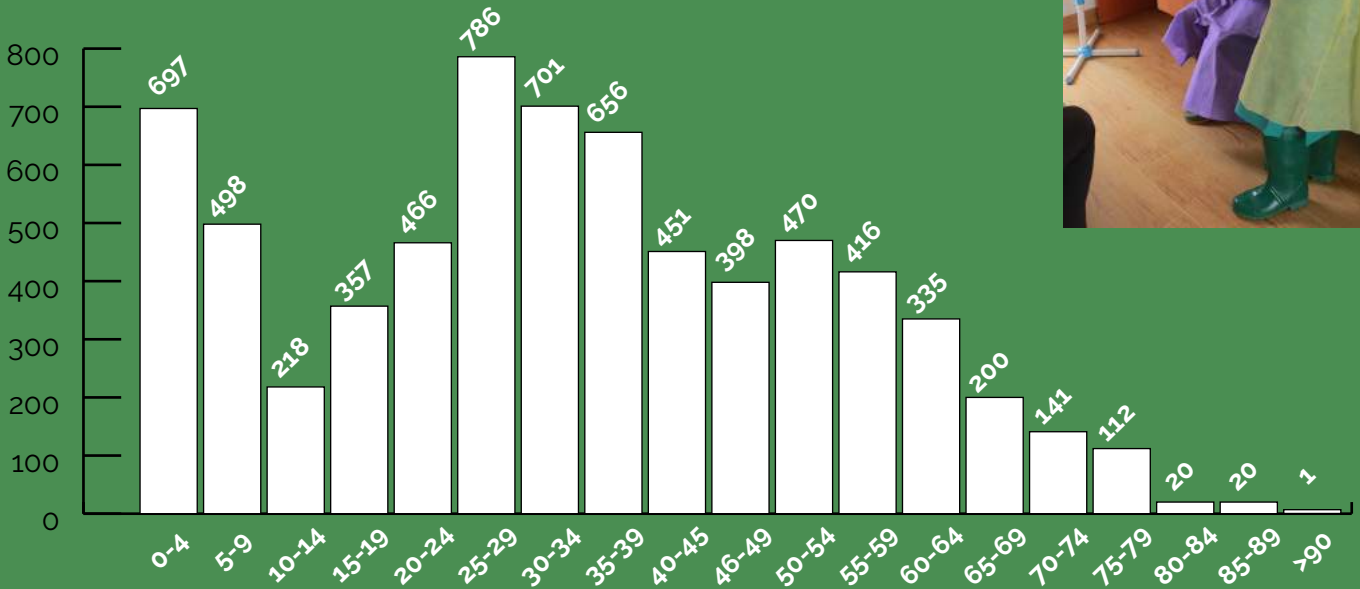
In 2020 the number of patients visiting and the number of individual patients went down by 2,032 and 1,354 respectively because of Covid-19.



HEALTH

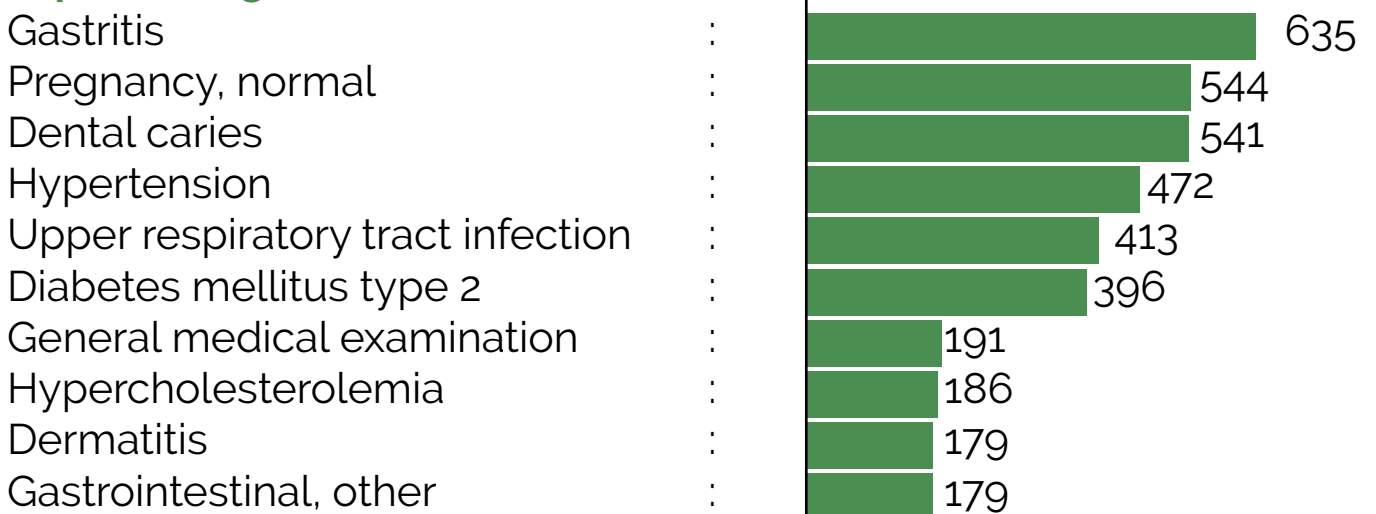
Visit and Diagnoses

Visits by Age



Most patients accessing ASRI health care were age 25 - 29 years old

Top Ten Diagnoses



Gastritis, pregnancy, and dental caries cases were the most common diagnoses in 2020. Previously in 2019 the figure for upper respiratory tract infection was in the third position for most common diagnoses at the ASRI Clinic, now this diagnosis is in fifth position.

HEALTH

Mobile Clinic and DOTS

Mobile Clinic

Mobile clinic provides medical services to patients in remote areas. Monthly, ASRI's Mobile Clinic visited Jihing sub-villages in Kayong Utara District. From April to June, we canceled the Mobile Clinic program to prevent the spread of Covid-19. However, we still send medicines to some patients who need to take them regularly. After that, in July the mobile clinic was back in operation using the health protocol.

8 trips in Jihing
202 patients visits
109 individuals

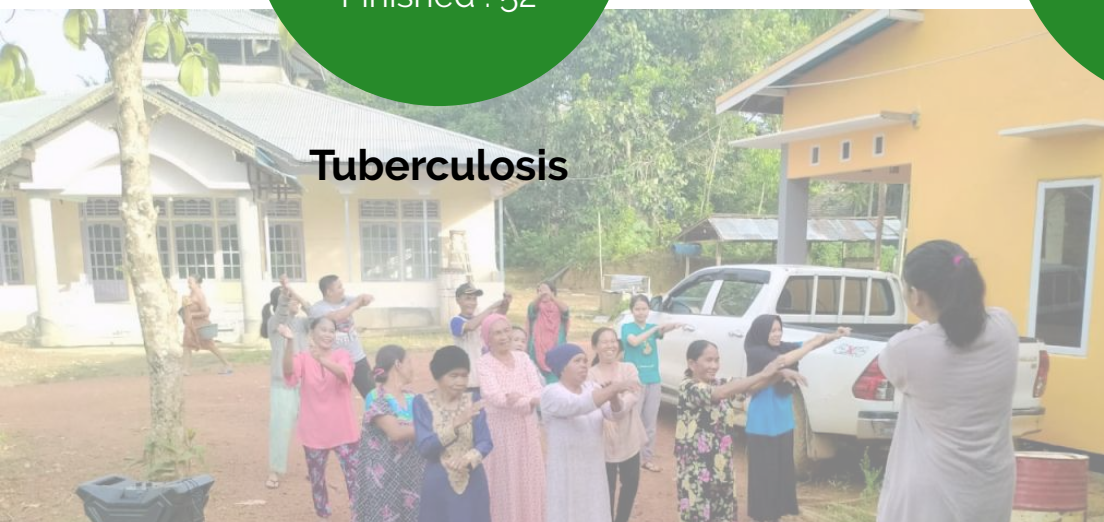
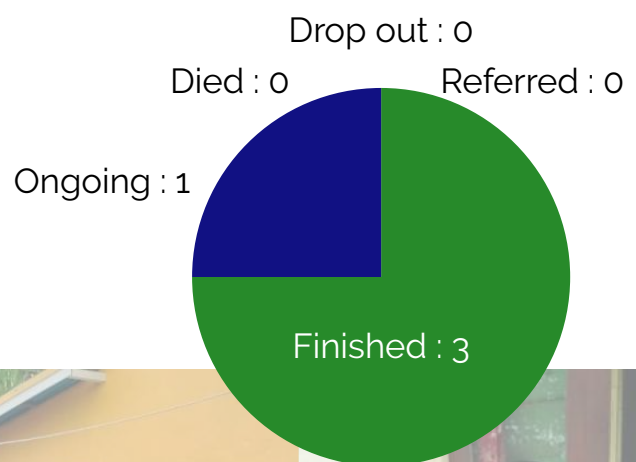
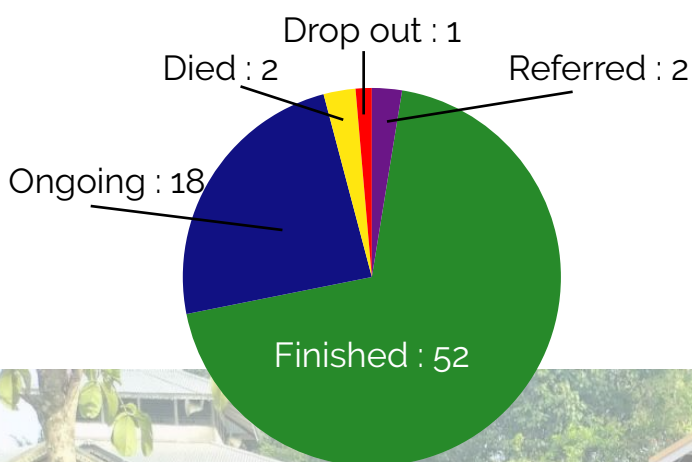


DOTS Strategy against Tuberculosis

ASRI's Directly Observed Treatment Short-course (DOTS) ensures that every tuberculosis (TB) and leprosy patient takes regular doses of their medication. In 2019, 10 DOTS workers and 1 DOTS Coordinator helped 75 TB patients and 4 leprosy patients.

Tuberculosis

New Patients : 41
Continue treatment from 2019 : 34



Tuberculosis



Leprosy

HEALTH

Preventative Medicine

Immunizations

Immunizations for babies are offered at the ASRI Clinic on the third week of every month. ASRI obtains its vaccines from the Kayong Utara District Health Office and assists the Health Office with its immunization goals.

HBO	9
BCG	23
Polio 1	25
Polio 2	25
Polio 3	26
Polio 4	28
Polio Inject	8
Pentabio 1	24
Pentabio 2	31
Pentabio 3	27
Pentabio Advance	6
Measles	0
Measles Advance	6
TT1 Pregnant	2
TT2 Pregnant	2
TT2 Premarital	2
TT2 Booster	3
MR	30
Total	277

Birth Control

ASRI improves access for the community to get contraception for family planning.

Condom / pieces	258
Pil l/ person	43
Depo Shots (3 months) / person	45
Depo Shots (1 months) / person	8
IUD	5



HEALTH

Health Education, Ambulance and BPJS (Indonesian National Health Insurance)

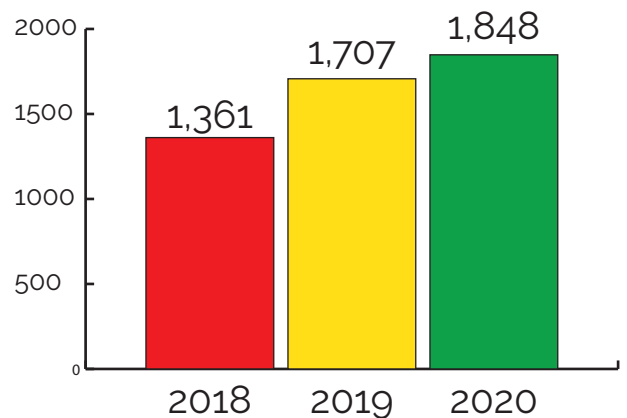
Health Education

Our concern about preventing the spread of Covid-19 has caused us to postpone the health education program in the ASRI clinic. Instead, we put various posters and banners to keep the visitors educated. Furthermore, we play videos about health on television while the patient is waiting.

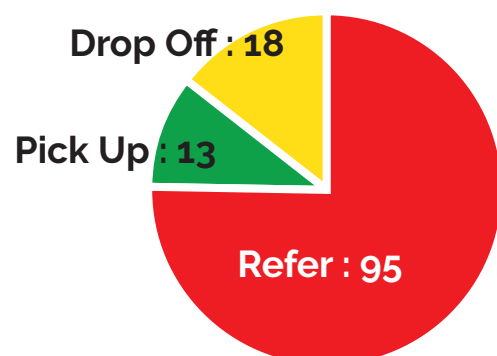


BPJS

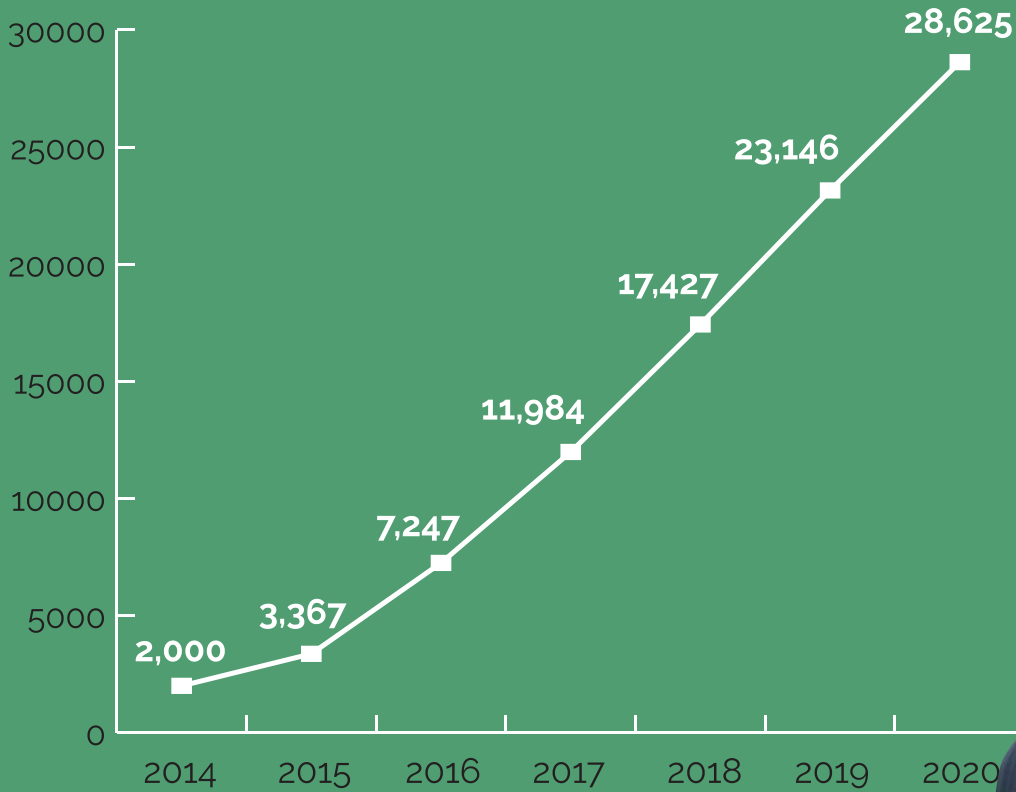
The number of BPJS members who chose ASRI as their primary-care facility increased by 141 members in 2020



Ambulance



Non-Cash Payments



The number of seedlings from patients from 2020 is 5,479 seedlings.



PLANETARY HEALTH EDUCATION

Outreach

In Clinic Waiting Room

Session : 9

People : 136



Radio Broadcasting

Session : 2



In Villages

Session : 13

People : 504

PLANETARY HEALTH EDUCATION

Field Courses & Volunteering

In January - March 2020 ASRI hosted 27 visitors from Indonesia, United Kingdom, the United States, Denmark, and Sweden. We temporarily stopped the exchange program in mid of March until December 2020 due to Covid-19.

27 Visitors

- 16 Education
- 1 Marketing and Communication
- 2 Medical students/Professionals
- 2 Volunteers
- 6 Guests/ Donor



PLANETARY HEALTH EDUCATION

ASRI Kids & ASRI Teens

ASRI Kids

There are 222 kids who were actively joining ASRI Kids. They were students of 4 schools around Gunung Palung National Park and kids who live near ASRI Clinic. ASRI Kids learned about Indonesian map, animals and their habitat, tropical rainforest, protected animals in Gunung Palung National Park, environmental threats, organic and non-organic waste, making recycled paper, mangroves, and healthy lifestyle: washing hands, eating healthy food, taking care of their teeth.

During the pandemic, ASRI Kids classes in schools were canceled. However, ASRI Kids classes at ASRI were still actively run through home projects and outdoor activities, such as making compost, gardening, and planting trees.



ASRI Teens

There were 86 teens who were actively involved in ASRI Teens. They were 56 students of 2 schools near Gunung Palung National Park and 30 teenagers who were voluntary to be active in ASRI Teens classes and also involved in community activities, such as campaign, community education, etc. At ASRI Teens, they learned about the rainforests, taxonomy, environmental threats, and planetary health.

During the pandemic, ASRI Teens were done both online and offline with physical distancing and in an open space. They were also given some home projects, such as making compost, gardening, cleaning the beach, etc.

PLANETARY HEALTH EDUCATION

Planetary Health Camp & Planetary Health Talks

Planetary Health Camp

PH Camp was done in September 2020. Due to the Covid-19 pandemic, we limited the number of participants and the camping activity was omitted. It was done for 6 days. There were 20 young people participating in this event. They were high school students, university students, and employees who were active members of nature lover community groups.



The activities were done both in the classroom, with physical distancing, and outside the classroom through field trips. They learned about planetary health and ASRI's programs as a planetary health model in action, tropical rainforest, mangroves, zoonosis, Covid-19 dan forest fire, climate change, and organic and non-organic waste.



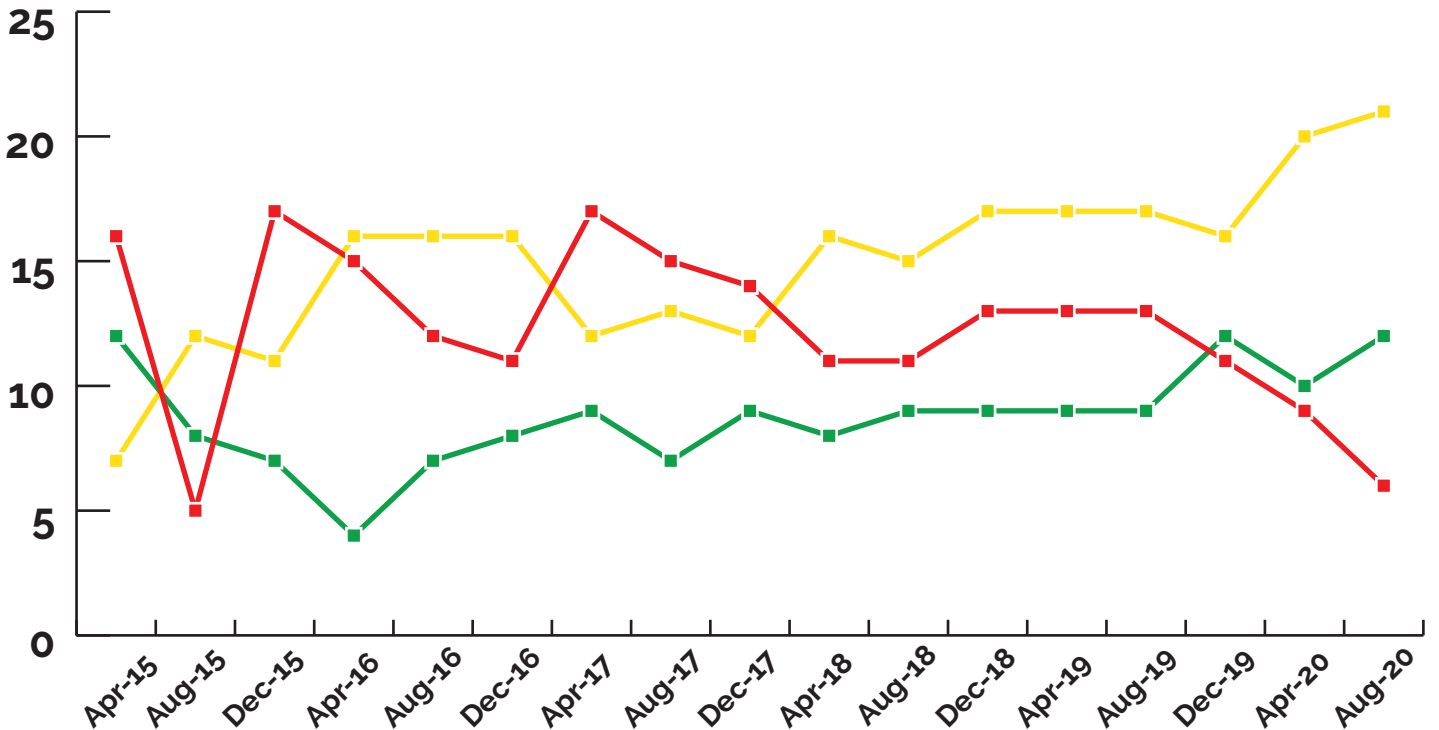
Planetary Health Talks

Most of the events were held online, and there was one event by the Planet Indonesia organization in Pontianak that invited ASRI as a speaker to explain ASRI's programs and experiences.

Due to Covid-19, the Planetary Health Talk event in Pontianak and Jakarta was also canceled but we replaced it with Online Talk Shows using the Zoom application. Besides, ASRI is also invited by The Ministry of Environment and Forestry, national and international organizations, podcasts, Instagram live, television, etc. We shared about ASRI's programs, our response to Covid-19, wildfires, seedling adoption, etc. The total number of participants who took part in offline and online events were 14.705

CONSERVATION

Deforestation Monitoring



- ASRI offers tiered health-care discounts to villages that decrease illegal logging activity, based on monitoring three times per year. The highest tier is green (70% discount), followed by yellow (50%), and red (30%)
- The pandemic has not only affected the health of the population, but also household economic welfare. Because they received orders for woods and they need money, so some people choose to back cutting down trees.
- Intensive patrol by the rangers inside the National Park area made loggers afraid to cut down trees

RED
6 / 15.38%

GREEN
12 / 30.77%

YELLOW
21 / 53.85%

CONSERVATION

Deforestation Monitoring: Forest Guardians



- 28 out of 30 Forest Guardians actively participate in the ASRI program in their village. Two Forest Guardians resigned. One of them resigned because he got a new permanent job. The other was because he was sick and needed medical treatment in Ketapang.
- Forest Guardians activities included monthly meetings, socializing the ASRI programs, mediating between community and ASRI, monitoring logging activity, collecting 20.160 seedlings per year, social service, and daily outreach with their neighbors to explain ASRI programs such as Chainsaw Buyback and seedling nurseries to pay for health care.
- Forest Guardians also help monitor and train ASRI partners who have joined the ASRI Chainsaw Buyback program to collect 500 seedlings.



COMMUNITY OUTREACH

10,196 People

28 Sub-villages



CONSERVATION

Alternative Livelihoods: Sustainable Agriculture

Farmers' Groups by the Numbers:

11	active farmer groups
9 out of 11	groups are independent from ASRI
12	groups mentioned above have registered with local government
64 cows and 45 goats	are owned by the farmers

There are nine farmer groups that successfully produced organic fertilizers in 2020, Parit Mulia (2 tons), Harapan Baru (5 tons), Sinar Abadi (5 tons), Padun Jaya (7 tons), Natai Belian (8 tons), Sepak Maju (2 tons), Mentubang (3 tons), Palong Sejahtera (2 tons), and Mutiara (5 tons).



CONSERVATION

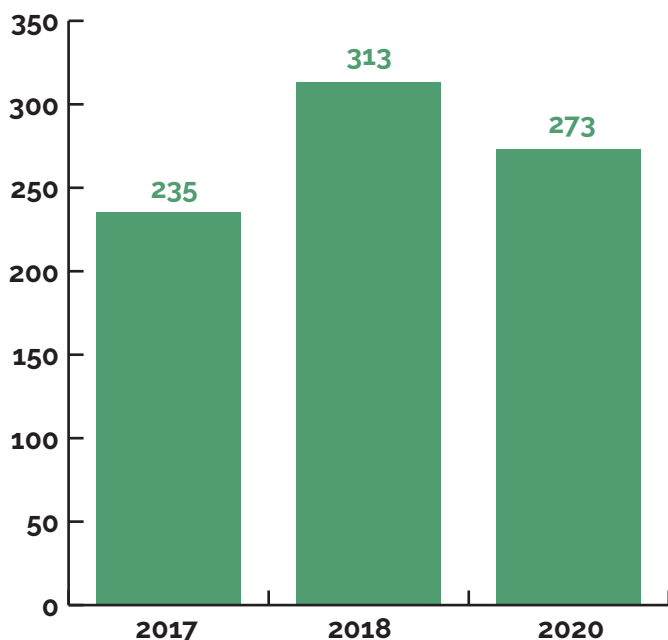
Alternative Livelihoods: Goats for Widows

Goats of **91** widows were checked monthly to monitor health and husbandry. And **57** goats sold for:

Education	: 15
Household economic needs	: 15
Home repairs	: 12
Savings	: 7
Celebrate religious holiday/ events	: 3
Transportation (Motorbike)	: 3
Health Care	: 1
Investment	: 1



The Total Number of Goats



CONSERVATION

Alternative Livelihoods: Chainsaw Buyback

ASRI has collected 178 chainsaws since the program launched in 2017

- 8 active loggers sold their chainsaws and started alternative livelihoods in 2020, for a total of 60 active loggers participating since the program launched in 2017.
- 29 in-active loggers joined the program in 2020. In total since 2017, ASRI has spent IDR 353,100,000 to buy chainsaws from 118 passive loggers.
- ASRI distributed approximately IDR 926,972,500 since 2017.
- 93% active loggers do not back into logging after the program
- 53% small businesses started by former logging households are still running well, and the other small businesses are changing their type of businesses.



- The Chainsaw Buyback Program has protected approximately 42,933 old-growth trees from being cut.
- 39% of the investment has been paid back to ASRI.
- The main type of businesses: retail, agriculture, food and drink



CONSERVATION

Reforestation

Laman Satong Site

- Collected 66,472 seedlings within and around village forest in Laman Satong
- New nursery with 125,000 seedlings capacity, and new greenhouse with 5,000 seedlings capacity. The total seedlings capacity there is 130,000.
- We planted 9,5 Ha in the Gunung Palung National Park Area

Sedahan Jaya Site

- We planted 8 Ha community gardens (Garden to Forest).

Rantau Panjang Site

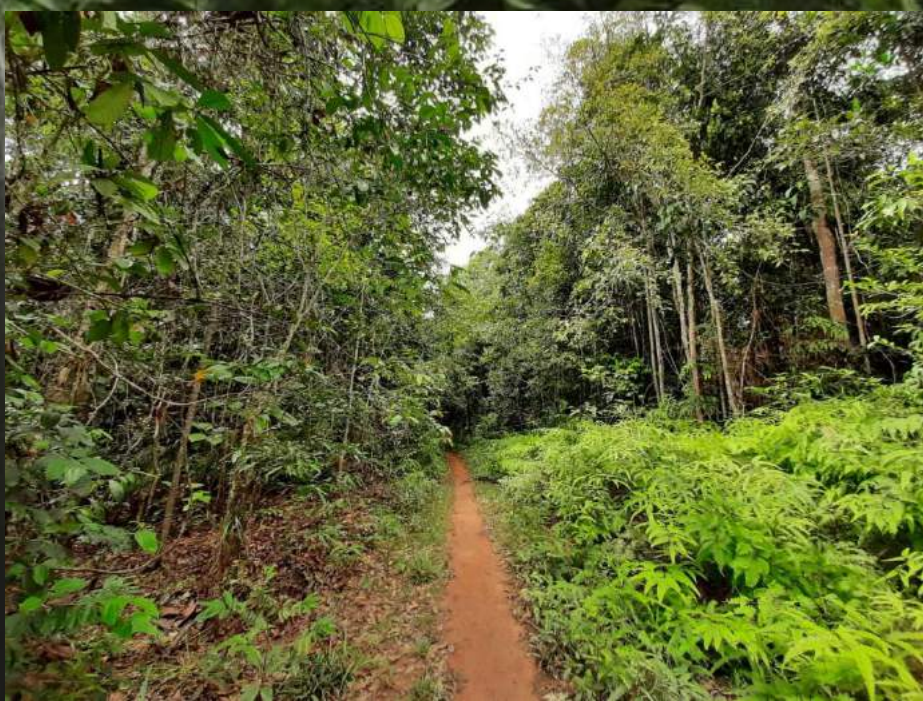
- Survival rate in 2020 is 81.77 %
- We replanted 2 Ha community garden in Rantau Panjang village which was burnt due to forest and land fires

Mentubang Site

- We planted 68 Ha community garden in Mentubang Village
- Green Day was canceled because of the Covid-19 issue

Pangkalan Jihing

- Build a nursery with 5,000 seedlings capacity



CONSERVATION

Reforestation

Non Cash Payment

28,625 seedlings we received from patients of 42 species

Forest Guardians Supporting Reforestation Activities

27,356 seedlings we received from forest guardians of 35 species

Ex-loggers Supporting Reforestation Activities

25,416 seedlings we received from forest guardians of 42 species

ASRI Kids and ASRI Teens Supporting Reforestation Activities

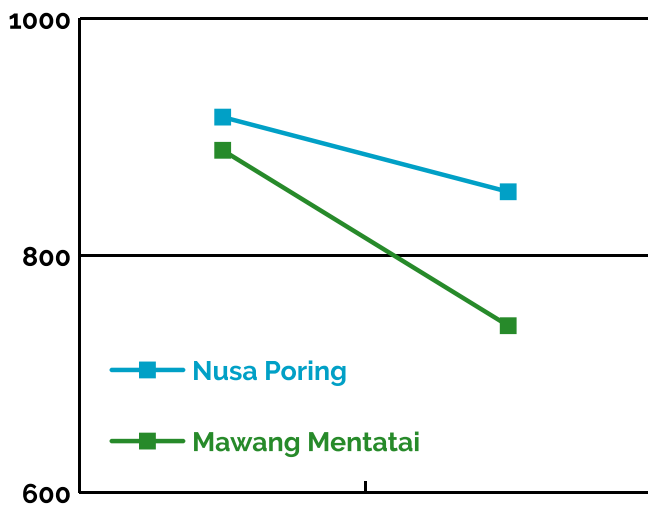
54 seedlings we received from ASRI Kids, and 111 seedlings we received from ASRI Teens.



BUKIT BAKA BUKIT RAYA SITE

Health - BBBR Clinic

Starting September 2018 ASRI provides health services for the community in two remote areas around the Bukit Baka Bukit Raya National Park: Mawang Mentatai Village and Nusa Poring Village. We have a Physician doctor, two midwives, and a nurse. Here are the data in 2020:



The number of individuals in 2020 was 673 patients and it decreased by 18.6% compared to the previous year, which was 827 patients. Furthermore, The number of visits in 2020 was 1595 visits. This number is slightly higher than the visits in 2019, which was 1508 visits.

The decrease in the number of individuals occurred because of COVID-19 and the relocation of the clinic location from Beloyang to Mawang 01. Besides, the renovation process for a new clinic in Mawang 01 caused the clinic to temporarily not operate for two months (September to October 2020). The clinic starts operating again in early November 2020.

Individuals

Mawang Mentatai	: 216
Nusa Poring	: 457



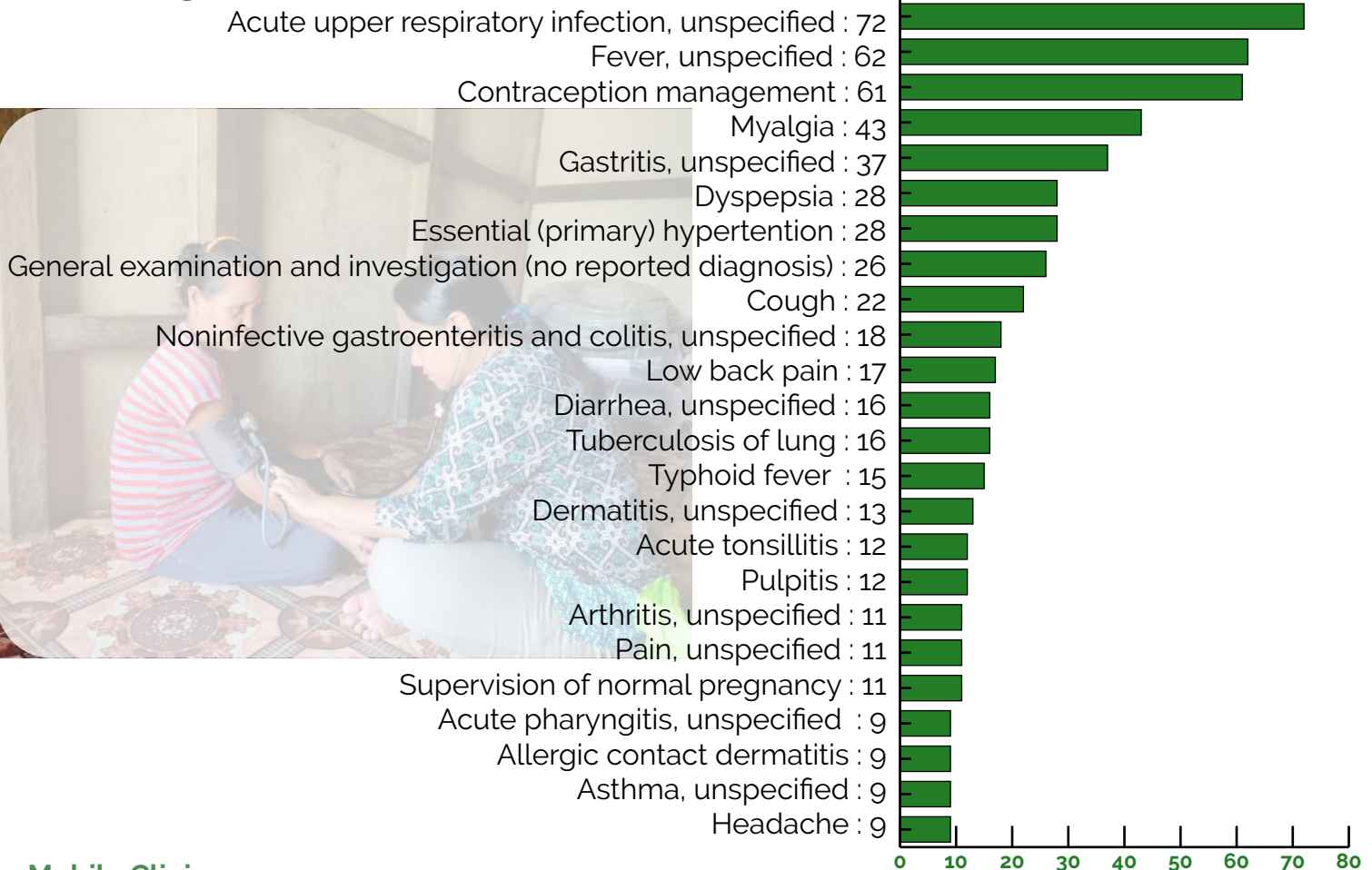
BUKIT BAKA BUKIT RAYA SITE

Health - BBBR Clinic

Number of babies born through delivery at the BBBR Clinic

Mawang Mentatai	: 6
Nusa Poring	: 2

Patient Diagnoses



Mobile Clinic

BBBR's Mobile Clinic visited 8 sub-villages in Melawi District. From May to August, we canceled the Mobile Clinic program to prevent the spread of Covid-19. We also canceled it in November and December because all the BBBR staff went to Sukadana, Kayong Utara Regency.

Dusun Mawang 01	: 2	Dusun Sekujang	: 3
Dusun Pintas Kemantar	: 2	Dusun Nanga Dawai	: 2
Dusun Beloyang	: 1	Dusun Mengkilau	: 4
Dusun Juoi	: 1	Dusun Guhung Bajang	: 1

Other Updates from the Health Program at BBBR

ASRI health workers (1 doctor and 2 midwives) held traditional midwife training at the Sub Puskesmas (Public health sub-center) in November 2020. This activity was also supported by the head of the Sub Puskesmas and the Puskesmas Menukung midwife coordinator. Through this activity, we hoped that traditional midwives will not make efforts to give birth but can direct pregnant women to deliver at the ASRI clinic in Mawang Mentatai and Nusa Poring villages or directly to the Menukung Puskesmas.

BUKIT BAKA BUKIT RAYA SITE

Conservation

Forest Guardians

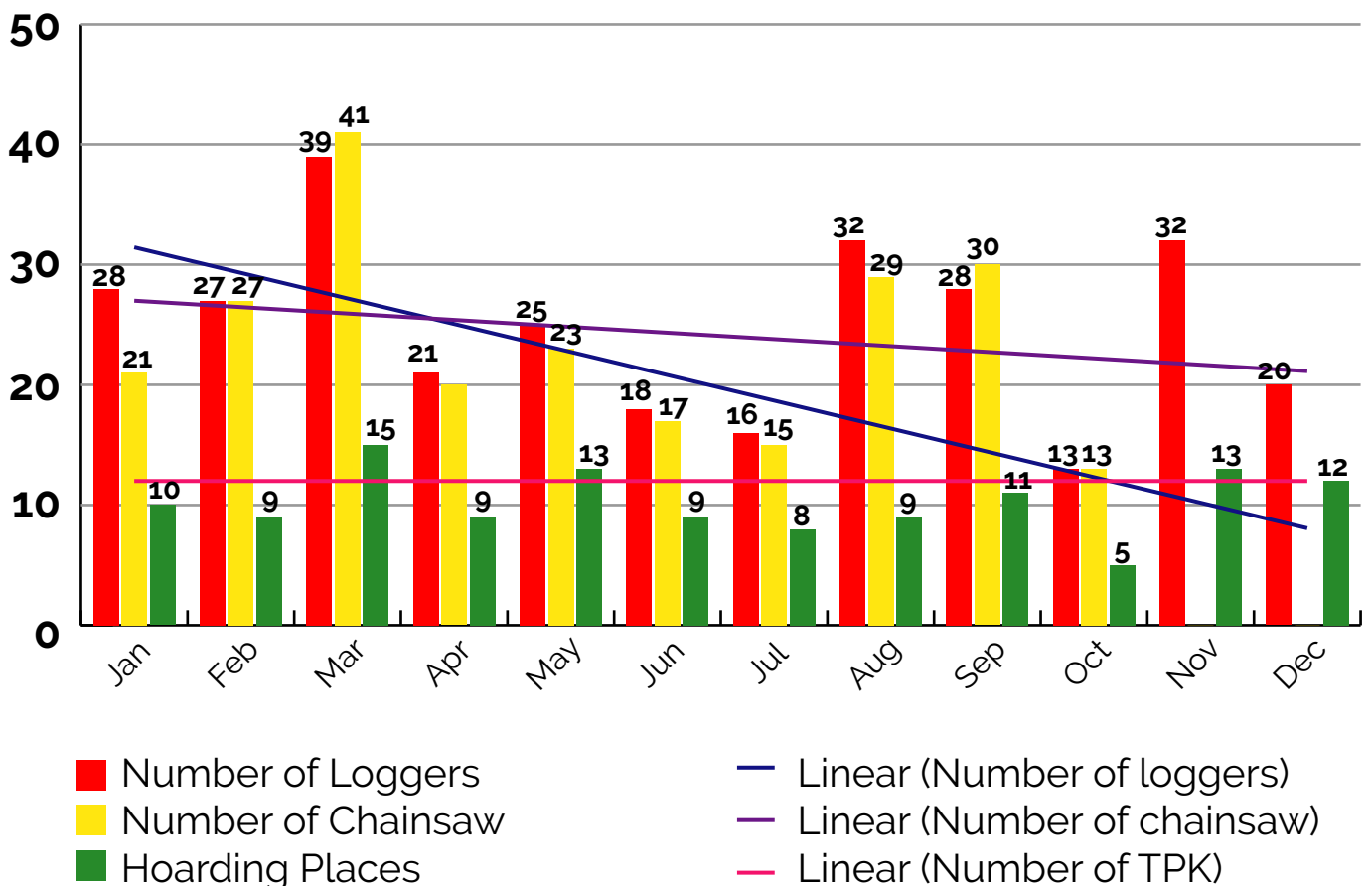
In 2020, ASRI has 9 forest guardians in 9 sub-villages. Forest Guardians activities included monthly meetings, capacity building about peatland ecosystems, forest fires, waste management, the impact of hunting activities on the ecosystem, biodiversity, the impact of oil palm plantations on the environment, discussions related to slash and burn cultivation, Covid-19. They also distributed trash bins in four sub-villages (Beloyang, Juoi, Mawang 01, and Mengkilau).



Deforestation Monitoring

In 2020, there were an average of 25 loggers in Mawang Mentatai and Nusa Poring Villages, with the highest number of loggers in March. The average number of chainsaws in the two villages was 20 units. The number of wood stacking / hoarding places (TPK) is 10, where in each village there is at least one TPK.

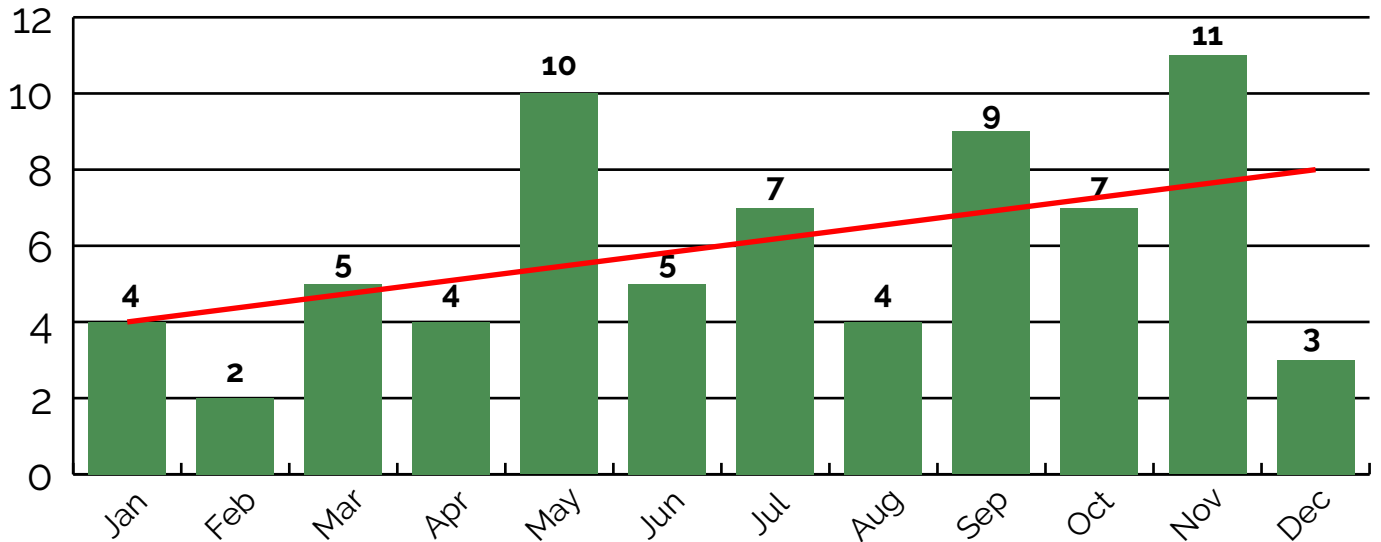
Number of Loggers, Chainsaw owner, and TPK in Mawang Mentatai Village and Nusa Poring Village



BUKIT BAKA BUKIT RAYA SITE

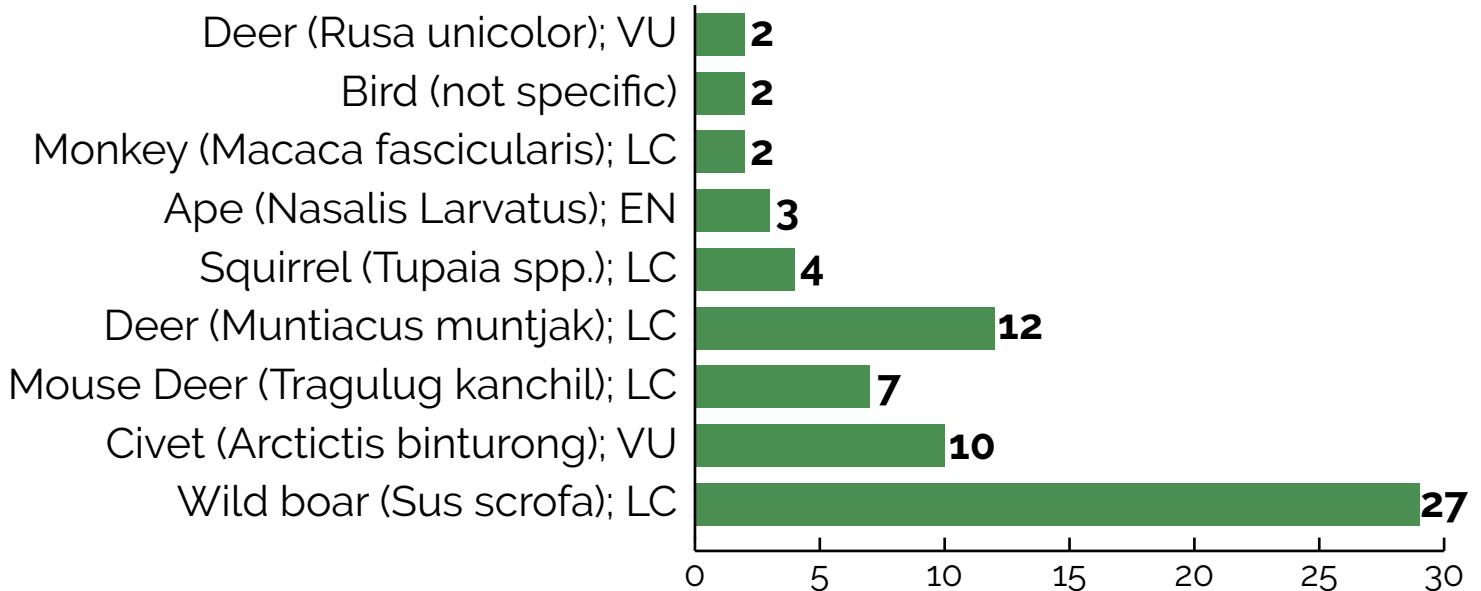
Conservation

Total number of wild animals being hunted



Wildlife Hunting Monitoring

The average number of wildlife hunting activities in the period January - October 2020 is 6 activities, where the most hunted animal is wild boar (*Sus scrofa*).



BUKIT BAKA BUKIT RAYA SITE

Conservation

Other Updates

1. Socialization for the payment of medical treatment with seedlings has been carried out in three sub-villages, namely Dusun Mawang 01, Pintas Kemantar, and Sekujang. In addition to socialization, ASRI has also signed a cooperation agreement with the three sub-villages regarding a 25% discount on medical services provided by ASRI, including health services at ASRI clinics in Mawang Mentatai and Nusa Poring villages as well as health services through mobile clinics, which is held every month in turns in nine sub-villages. The plan is that in 2021, ASRI will again hold socialization related to payments with seedlings and a 25% discount for medical treatment in the other six sub-villages. Hopefully this medical discount helps communities do not illegal logging and hunting of wildlife animals, and if the people in each sub-village can achieve the targets of both targets (zero illegal logging and hunting activities), ASRI will provide an increase in medical discount by 70%.

2. ASRI has built a nursery located in Beloyang Hamlet, Mawang Mentatai Village. This nursery capacity can accommodate 20,000 seedlings. The implementation of the nursery in Nusa Poring sub-villages, Nusa Poring village has not been completed, but the purchase of building materials has been carried out.

3. ASRI facilitators and staff have provided regular organic farming training and mentoring. The training provided to the community is about organic farming practices, including how to make organic fertilizers and herbicides. Organic farming training has been carried out in eight sub-villages namely Pintas Kemantar, Mawang 01, Beloyang, Juoi, Nanga Dawai, Mengkilau, Sekujang, and Guhung Bajang. The number of participants until September 2020 was 272 people, consisting of 84 male participants and 188 female participants.

- ASRI has provided vegetable seeds to mothers in eight sub-villages at the end of the organic farming training.
4. vegetable seeds are then planted in their respective yards. Based on the analysis, more than 50% of participants who received training in family gardens (including housewives) were able to use their yards as gardens.



BUKIT BAKA BUKIT RAYA SITE

Planetary Health Education

ASRI Kids and ASRI Teens

ASRI staff have completed 13 meetings of ASRI Kids and ASRI Teens. We taught 24 elementary students and 40 elementary students in Mawang Mentatai Village about planetary health or integration between health and the environment. Due to the Covid-19, the classes are not allowed in SD and SMP in Nusa Poring Village.

The topics of the ASRI Kids meeting include environmental threats, waste control, introduction to animals in the Bukit Baka Bukit Raya National Park and their habitats, plastic waste management, etc. The topics of the ASRI Teens meeting include global warming, climate change adaptation and mitigation, beneficial microorganisms, introduction of animals in the Bukit Baka Bukit Raya National Park and their habitats, pollution, etc.



Outreach in Villages

ASRI's routine outreach to the community in each sub-villages was given to 294 participants. This activity is part of our efforts to educate the communities about health and the environment.



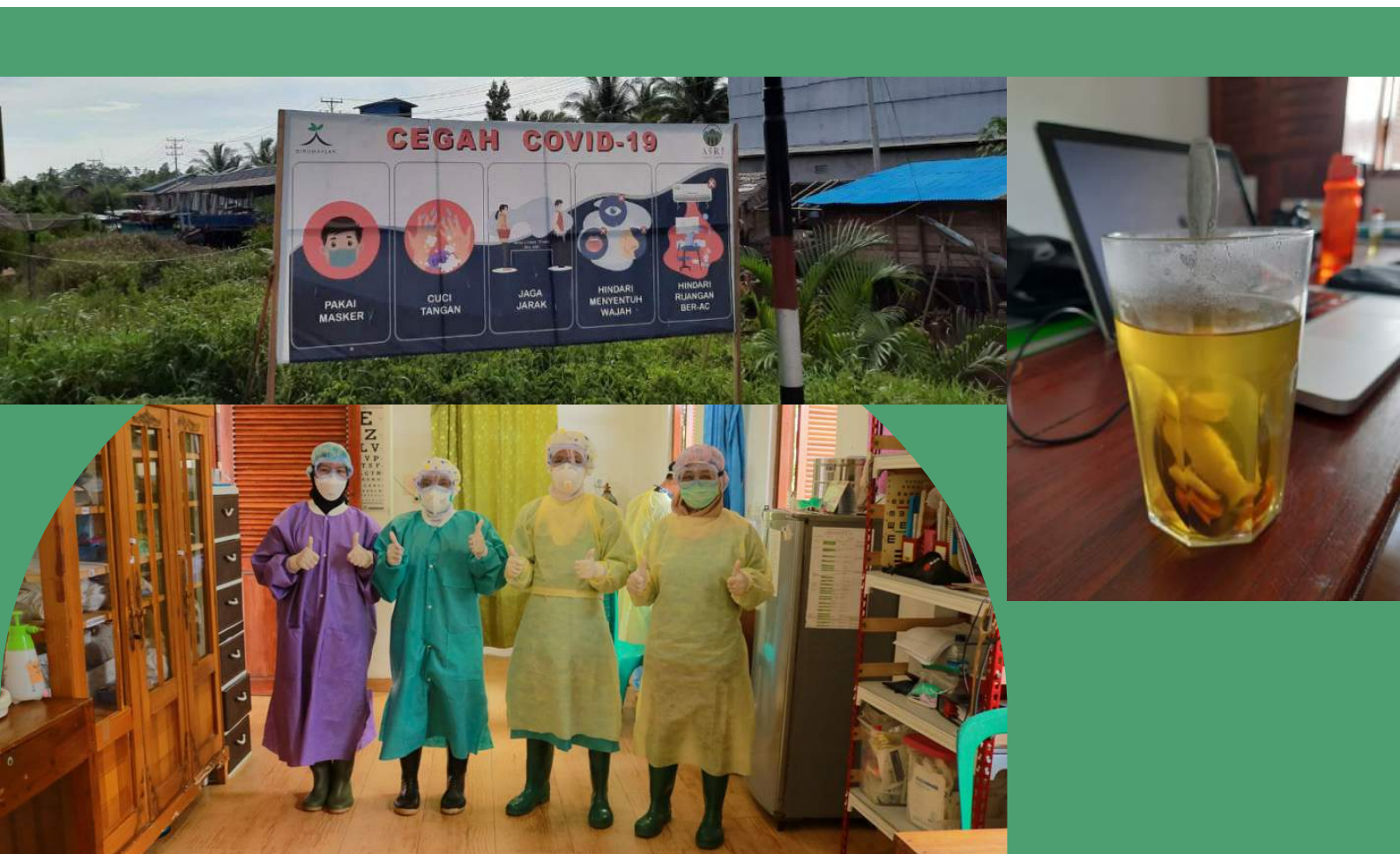
ASRI'S RESPONSE OF COVID-19

In Sukadana, Kayong Utara Regency



The following are ASRI's responses to preventing the spread of Covid-19:

- ASRI began to separate and isolate any patients or staff that had traveled from high-risk zones.
- All patients who come to the ASRI clinic must wear a cloth mask, check their body temperature, and wash their hands before meeting the healthcare workers.
- Patients with flu, cough, and fever symptoms will be examined by healthcare workers in a different room.
- We provide slippers for patients who come to ASRI Clinic. Then we wash all the slippers twice a day.
- ASRI healthcare workers are required to use Personal Protective Equipment (PPE).
- ASRI healthcare workers have to take a shower as soon as they finish work.
- ASRI provides herbal drinks to all staff every day.
- We put up banners and posters in ASRI Clinic and villages around Sukadana to educate people about Covid-19.



ASRI'S RESPONSE OF COVID-19

In Sukadana, Kayong Utara Regency



The pandemic not only affects the health of the population but also affects the economic welfare of families. Amongst the communities where ASRI works, the pandemic seems to have the greatest impact on farmers. The agricultural products are ready to be harvested, but there are no buyers, or if they are lucky enough to find a wholesaler to buy agricultural products, the price will drop sharply. They are questioning: How will I support my family? Ensuring that no one will have to choose between the health of their family and the health of the environment, ASRI has created a Conservation Stimulus program in which we bought their agricultural products such as rice, etc, at pre-Covid-19 prices to help the farmers from struggling and then distributed the products to the needed. Moreover, ASRI also helps ex-loggers who have participated in the Chainsaw Buyback Program by providing cash incentives after nursing trees. ASRI promises to continue to expand the program to continue to support the community during the pandemic.



Conservation Stimulus Program:

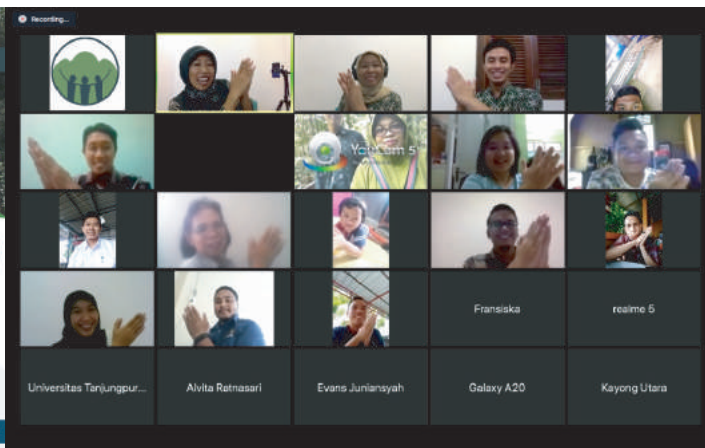
243	Farmers in 17 sub-villages
16	types of agricultural (such as watermelon, chili, orange, cucumber, rice, pineapple, etc)
1,376	Families got the agricultural products in 26 sub-villages
55	Ex-Loggers participated in chainsaw buyback program gained additional income from backyard nursery

ASRI'S RESPONSE OF COVID-19

In Sukadana, Kayong Utara Regency



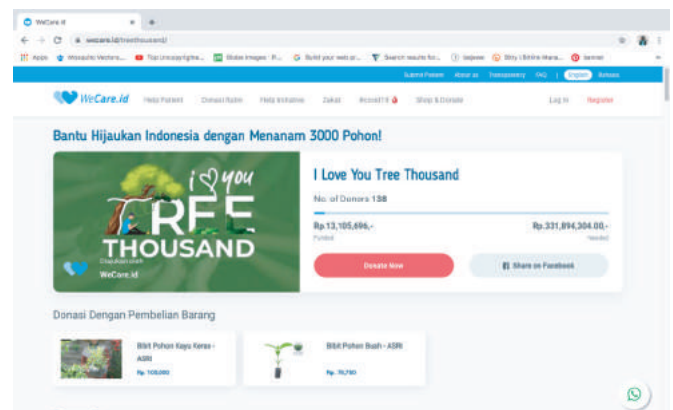
In addition to the medical and financial support provided by ASRI, we have distributed more than 2,000 reusable masks with information leaflets to disseminate scientific and related information. ASRI as well has provided the local government clinics with protective gear, participated in the government-led COVID-19 task forces, and have created the social media platform "@dirumahjak_" to mean youth engagement in stopping the spread of the virus and misinformation. In order to increase and spreading our online presence and ensuring accurate information throughout Indonesia, ASRI has been participating in print and radio interviews and has spoken in webinars with information on how to prevent the spread of COVID-19, combat Covid-19 related stigma that survivors and healthcare workers are facing with, and how pandemics relate to environmental and forest health. More than 150 people attended these webinars, including well-known government officials and policy influencers.



ASRI'S NEW PARTNERSHIP, AND SEEDLING ADOPTION PROJECT

NEW
NEW

- In 2020, ASRI cooperated with Indonesian organizations (such as Wecare.id and WRI) to launch the "Tree Thousand Campaign": <https://wecare.id/treethousand/>.
- This campaign is about raising people's awareness to protect the forest and be responsible for the emissions released. On this website, people can calculate their emissions and know how many trees they have to contribute.
- Starting in October 2019, ASRI launched a new project: Seedling Adoption. In the beginning, people adopted seedling via WhatsApp, then in May 2020, we launched a new website with the adoption seedling feature in it.
- From October 2019 to December 2020 there were 429 adopters and 1,048 seedlings adopted in ASRI.



MARKETING AND COMMUNICATION UPDATES



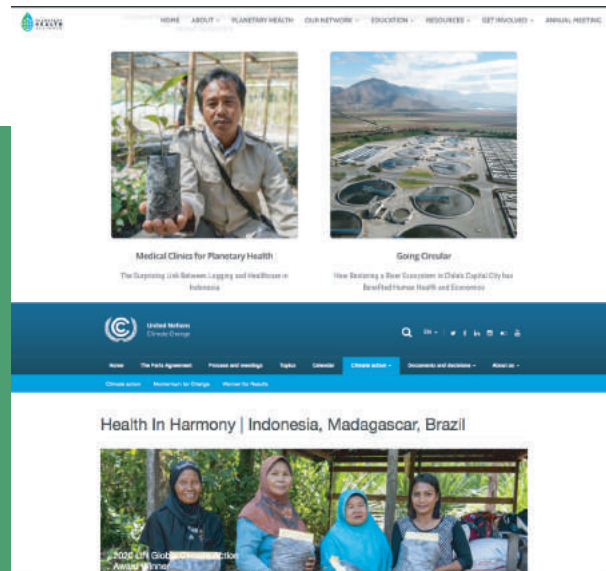
- ASRI officially launched a new website in May 2020. Now the new website has some features such as the adoption page.

- In 2020, ASRI reaches 6,700 followers on Instagram organically. So that this platform is very useful to be able to raise people's awareness to save lives, save rainforests.

- In May 2020, ASRI hired a videographer and a graphic designer under the marketing and communication team to boost ASRI's social media platform and ASRI branding.

- ASRI and our partnership - Health In Harmony (HIH) was featured in Planetary Health Case Studies in Planetary Health Alliance.

- In October 2020, the United Nations announced that ASRI and HIH is one of the winners of Global Climate Action Awards in the Women for Results category.



ASRI'S RESPONSE OF COVID-19

In ASRI Replication Site, Bukit Baka Bukit Raya



The Covid-19 outbreak, which is now becoming a serious problem in the world, also has an impact on communities at ASRI's work areas bordering the Bukit Baka Bukit Raya National Park (BBBRNP). Not only does it affect health and economic conditions, but a large amount of misleading information about the spread of the epidemic has also caused turmoil and panic in the community. To this end, ASRI BBBR staff have been working hard to prevent Covid-19 and are preparing to deal with suspected or positive patients with Covid-19 that may occur in the BBBR area. To achieve all of these, ASRI BBBR staff took the following steps:

1. Coordination between ASRI BBBR doctor and the health team at Community Health Center (Indonesian: Puskesmas) in Menukung
2. Using PPE during service hours and restrictions on service hours
3. Making washbasins in clinics and a healthy lifestyle (Indonesian: Gerakan Masyarakat Sehat/GERMAS) poster attachments
4. Socialization to communities around Bukit Baka Bukit Raya National Park

