

PRESENTATION



KAYIRABWA CHIMPANZEE CONSERVANCY CHALLENGES AND OPPORTUNITIES

BY: JOSEPH S. SERUGO

Em:josephserugo2@gmail.com

Tel./Whatsapp +256 772 512733

Facebook: Joseph Serugo

Joseph Serugo with Masai

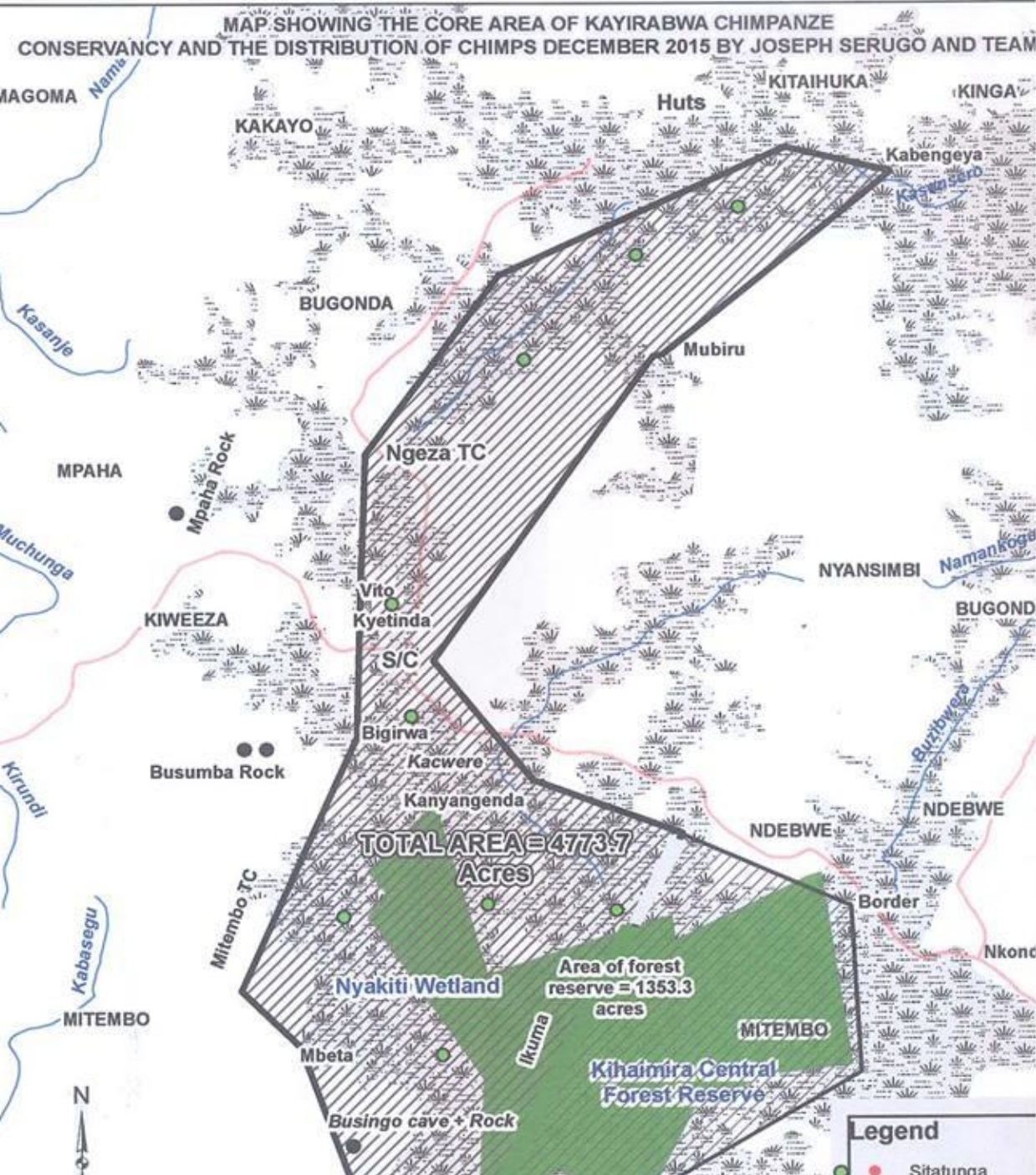


- ❖ Served in all National Parks in Uganda from 1990 until retirement in 2007.
- ❖ Currently in private conservation practice: Director of proposed Kayirabwa Chimpanzee Conservancy in western Uganda; Tourism and wildlife Consultant.
- ❖ Involved in recycling of biomass waste to produce briquettes in Kampala.
- ❖ Writer and farmer practicing Analog Forestry.



Kayirabwa Chimpanzee Conservancy (KCC) is an amalgamation of small forest patches formerly covering over 6,000 ha owned by more than 500 households. The core area is Kihaimira Central Forest Reserve which is 541 ha. It is located at the edge of the Albertine Rift, Kakumiro District- Bunyoro Region. The remaining forest patches are situated along rivers and streams and in areas where agriculture is not suitable such as *Macaranga* forests and rocky areas.

MAP SHOWING THE CORE AREA OF KAYIRABWA CHIMPANZE CONSERVANCY AND THE DISTRIBUTION OF CHIMPS DECEMBER 2015 BY JOSEPH SERUGO AND TEAM



Challenges



- ❖ This large group of chimpanzees comprising of 50-150 individuals is most likely to be at the easternmost limit of chimpanzee distribution in Uganda. They keep roaming in small groups of 3-10 resulting in the following:
- ❖ Increased crop raiding including uprooting banana suckers, eating up ripe brew bananas and drinking local brew (in preparation) as their natural foods have been seriously reduced. These form easy baits for mass poisoning of the chimpanzees.
- ❖ Chimpanzees face more harassment by communities as encounters with humans along roads and paths; wells and gardens are becoming more common.

Challenges



- ❖ Poverty
- ❖ Danger of zoonotic diseases
- ❖ Road kills on improved roads

OPPORTUNITIES



- ❖ Research and Monitoring
- ❖ Development of sustainable agriculture
- ❖ Presence of Kihaimira Central Forest Reserve as core area
- ❖ Local support for chimpanzee conservation
- ❖ Great Potential for agro-ecotourism
- ❖ Great potential for nature based enterprises eg. bee keeping
- ❖ Conducive government policies

Some pictures



❖ Chimps in a private forest



More pics



❖ Agriculture taking over forests





❖ ***Tobacco growing in Bunyoro.***



Tobacco growing



❖ Tobacco – a threat to health

